



# CS3-GR

## cellular communication option

The Calsense Cellular communication option, model CS3-GR, is an embedded industrial-grade 4G LTE wireless solution offering the latest LTE performance, time-sensitive event tracking and cloud connectivity.

### description

Flexible and robust, the CS3-GR option is an intelligent gateway which automatically detects if the connection to the cloud is lost and reestablishes its connection. Designed for the harshest of environments, this device ensures you can remotely manage your controllers nearly anywhere within the United States.

- Delivers reliable, long distance data communication via the internet
- Doesn't require any trenching or wires

### cellular accessories

#### antennas

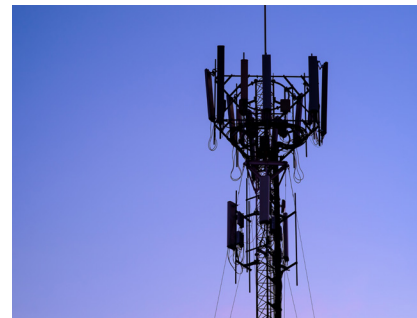
An antenna, purchased separately is required to use the Cellular communication option.

- The Calsense Stubby Antenna, model GR-STUBBY, is a 3-dBi omnidirectional surface mount antenna designed for all environments and applications
- The Calsense Stick Antenna, model GR-STICK-5, is a 5-dBi quad-band fiberglass omnidirectional antenna used to extend the range. LMR-400-DB or LMR-600-DB cable is required if mounting a stick antenna.
- The Calsense Antenna Cable Surge Protector, model ANT-PROT, helps protect a cellular radio antenna from lightning strikes and is required when using a GR-STICK-5 antenna

### cellular communications data access service plans

Calsense offers a 5-year, 1-year and 1-month prepaid data plans with the cellular communication option. These plans allow the user to use a Calsense cellular device without the need to sign a contract with a third-party service provider. The plans for multiple controllers support up to 35-controllers sharing a single data plan.

- COMM-5YR provides a one- or two-controllers 5-consecutive years of data communication service
- COMM-5YR-M provides multiple controllers, whether on a *FLOWSENSE*® chain or using a hub, 5-consecutive years of data communication service
- COMM-1YR provides a one- or two-controllers twelve consecutive months, 1-year, of data communication service
- COMM-1YR-M provides multiple controllers, whether on a *FLOWSENSE* chain or using a hub, twelve consecutive months, 1-year, of data communication service
- COMM-1MN provides a one- or two-controllers 1-month of data communication service
- COMM-1MN-M provides multiple controllers, whether on a *FLOWSENSE* chain or using a hub, 1-month of data communication service



### technical specifications

#### cellular interface

- 4G LTE: 700/850/AWS1700/1900 MHz
- UMTS/HSPA+: 850/1900 MHz
- GSM/GPRS/EDGE: 850/1900
- Transfer Rates: up to 100 Mbps downlink, up to 50 Mbps uplink

#### environmental

- Operating Temperature: -40° to 85°C (-40° to 185°F)
- Relative Humidity: 20 to 90%, non-condensing

#### certifications

- EMC: FCC Part 15 Class B
- RF: FCC Part 22, 24, and 27
- Safety: UL® 60950-1 2nd Ed.
- Network: PTCRB
- Carrier Approval: AT&T

#### warranty

- 2-year limited warranty

FLOWSENSE is a registered trademark of California Sensor Corporation dba Calsense. IEEE is a registered trademark of The Institute of Electrical and Electronics Engineers, Inc. UL is a registered certification mark of UL LLC.