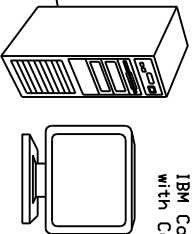


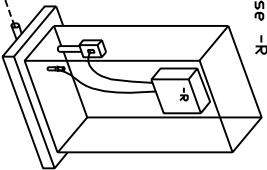
# PHONE COMMUNICATIONS OVERVIEW

RJ-11 phone jack connected to computer's phone modem (internal or external)

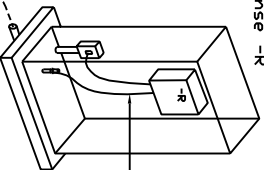


IBM Compatible Personal Computer with Calsense Command Center Software

Calsense -R



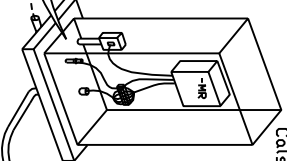
Calsense -R



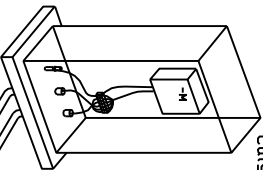
Field common tied to ground rod (typical) (see Transient Protection Grounding section of the Calsense Designers Guide)

Notes :  
The -R is a stand-alone controller which includes an internal phone modem.  
Each -R controller requires a separate phone connection.

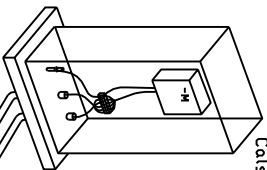
Calsense -MR



Calsense -M

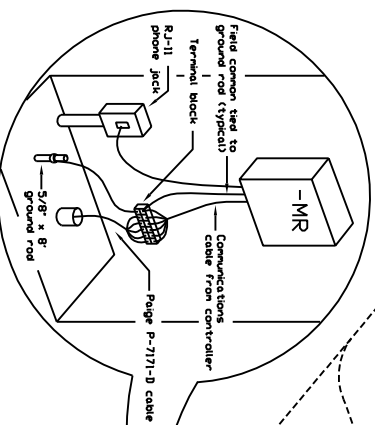


Calsense -M



Continue cable to other controllers

Paige P-7171-D cable (or equivalent) in conduit



Notes :  
The -MR controller includes a line amplifier, phone modem and the ability to chain other controllers with the modem. A maximum of 31 controllers can be connected to one -MR controller.

The total length of cable on 1 chain cannot exceed 5,000 ft.  
-M controller includes hardware to chain to another -M controller or to a -MR controller. Each chain of controllers must have one -MR controller connected to a phone line.