

## 12.0 SHARING WEATHER TASK

Weather Sharing is designed to gather weather related information from one or more controllers and/or one or more weather stations and then share it with one or more controllers. This enables the customer to automatically adjust the irrigation stations run time according to the actual weather conditions.

Do not get Weather Sharing confused with Rain Polling. Weather Sharing will only relay the weather data to the other controllers for them to use in calculating irrigation. Rain Polling can be used to stop irrigation due to rain at controllers without a Rain Bucket.

### SEE SECTION 13.0 FOR RAIN POLLING

## 12.1 GATHERING WEATHER DATA

1. In the toolbar at the top of the screen select **Setup** and scroll down to **Tasks** and click on it (Figure 12.1.1).

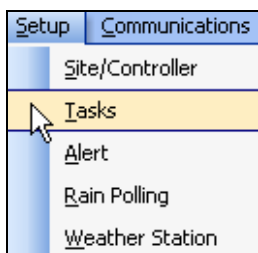


Figure 12.1.1

**Note:** This will take you to the “**Task Setup**” window (Figure 12.1.2).

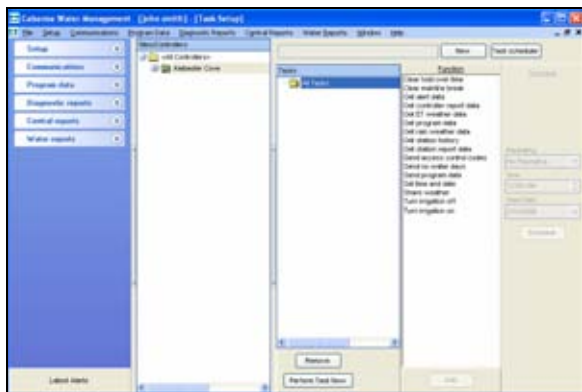


Figure 12.1.2

2. Click on the **New** button to add a new task. Type in a name for the task that will distinguish it from other tasks that you have or will put in (Figure 12.1.3).

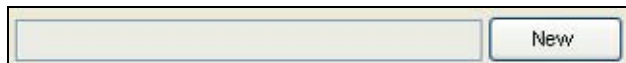


Figure 12.1.3

**Note:** The **New** button will change to read **OK**. The name of the new task name will appear in the box as you type it (Figure 12.1.4).



Figure 12.1.4

3. Once you are satisfied with the task name click on the **OK** button. This will add the task to the “**Tasks**” window (Figure 12.1.5).

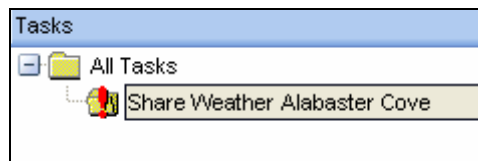


Figure 12.1.5

**Note:** The task will have a **RED** exclamation point in the folder next to the task name until the task is completely entered.

In this example you are shown how to gather both rain weather data and ET weather data. If you only have one or the other just select the function for the one that you have.

**Note:** If you are gathering ET information from a controller you **must** have an ET gage connected to that controller. If you are gathering rain weather data from a controller you **must** have a rain bucket connected to that controller.

4. Next you will have to decide which functions that you want to take place under this task. Click on a function to highlight it. If you want to choose multiple functions press the **Crtl** key and click on each function until done (Figure 12.1.6).

**Note:** Do not add any other functions to a weather sharing task, schedule them separately. This will cut down on the communications time required. The weather sharing window has a time constraint.

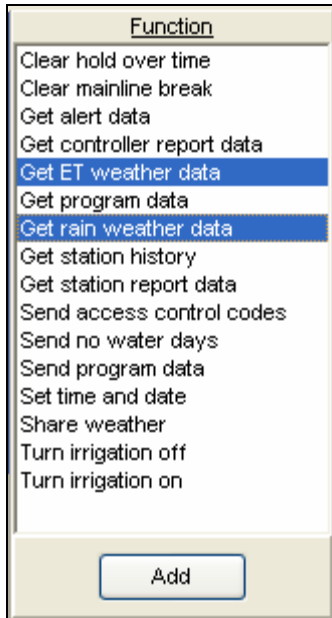


Figure 12.1.6

- Once you have selected a function click on the **Add** button to add the function(s) to your task.

**Note:** The selected functions will appear as sub-sections of the task itself (Figure 12.1.7).

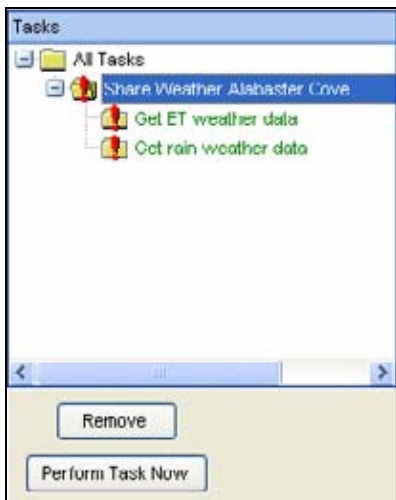


Figure 12.1.7

- Next highlight the **“Get rain weather data”** function (Figure 12.1.8).

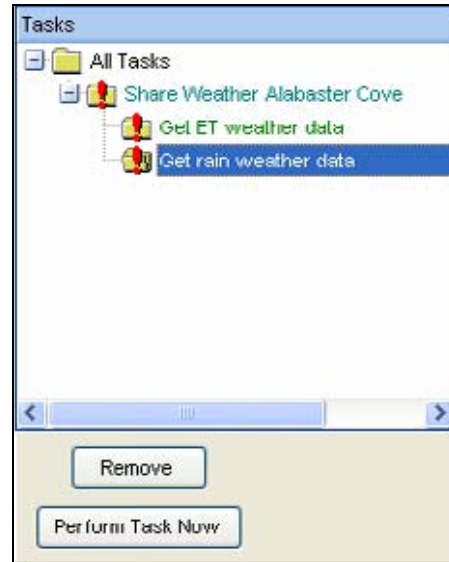


Figure 12.1.8

- Now highlight the controller from the **“Site / Controller”** window that you want to get rain weather data from. Remember this controller must have a rain bucket attached. (Figure 12.1.9).

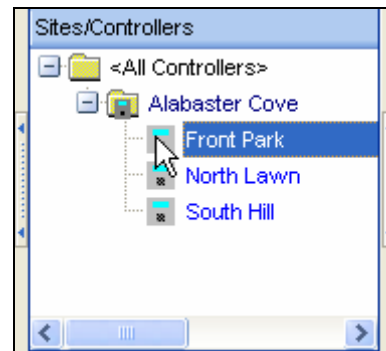


Figure 12.1.9

- Then left click on the controller holding down the mouse button drag and drop the controller into the **Get rain weather data** folder in the **Tasks** window. (Figure 12.1.10)

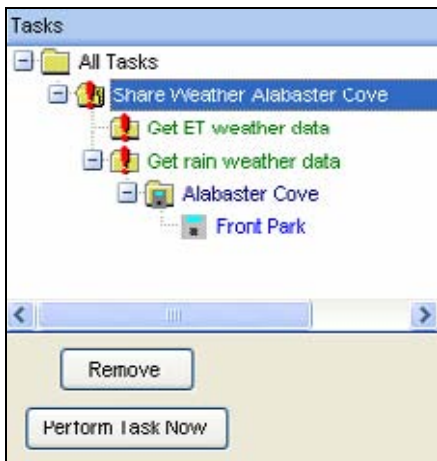


Figure 12.1.10

**Note:** A window will appear asking the following: “Do you want to automatically poll this controller for rain during the scheduled polling time”? This will appear only if this specific controller is currently not selected to poll rain (Figure 12.1.11).

**Note:** The screen below (Figure 12.1.11) will **not** appear if Rain Polling is not turned on. (See Section 13.0 for more information).

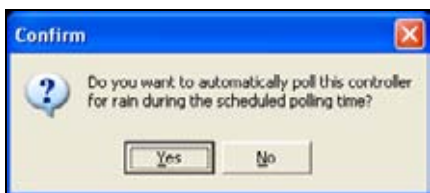


Figure 12.1.11

9. Selecting **No** will allow you to not add this controller to your rain polling list. Select **No** if you do not have rain polling turned on also. (See Section 13.0 for Rain Polling instructions).

**Note:** Selecting **Yes** will automatically add this controller to the rain polling list if you already have Rain Polling turned on.

10. Once you have assigned the controller that you want to **Get rain weather from** it should appear under the “**Get rain weather**” task (Figure 12.1.12).

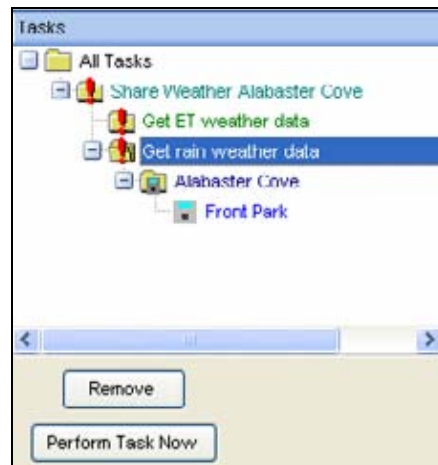


Figure 12.1.12

11. Now you want to do the same thing for “**Get ET weather data**”. Highlight the “**Get ET weather data**” folder under the “**Share weather**” folder in the **Tasks** window (Figure 12.1.13).

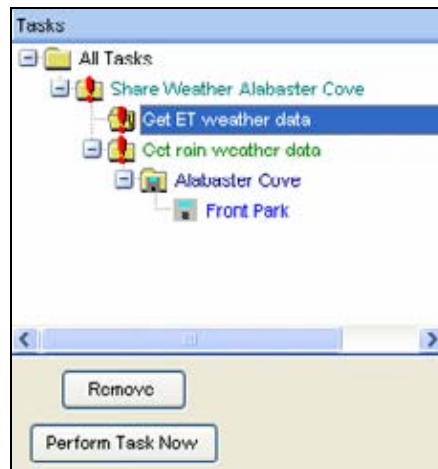


Figure 12.1.13

12. Now highlight the controller from the “**Site / Controller**” window that you want to get **ET weather data** from. Remember this controller must have an ET Gage attached (Figure 12.1.14).



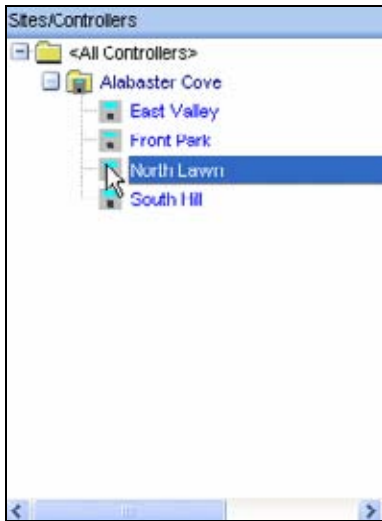


Figure 12.1.14

- left click on the controller holding down the mouse button drag and drop the controller into the **Get ET weather data** folder (Figure 12.1.15)



Figure 12.1.15

- Now this controller should appear directly under the **Get ET weather data** folder in the **Tasks** window (Figure 12.1.16).

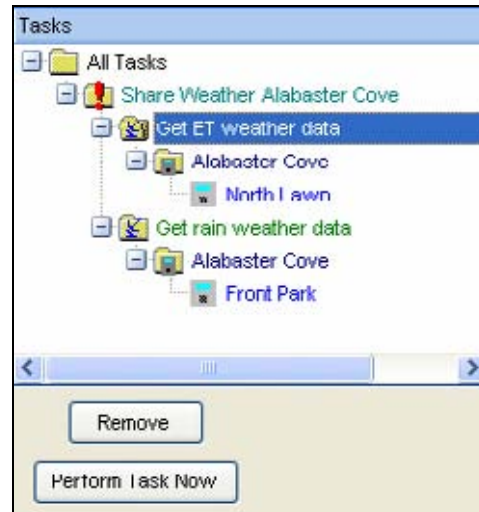


Figure 12.1.16

## 12.2 SHARING WEATHER DATA

**Note:** You must follow the steps in Section 12.0 through 12.1 before moving on with this section.

- Next highlight the **Share weather** function in the **Function** window (Figure 12.2.1).

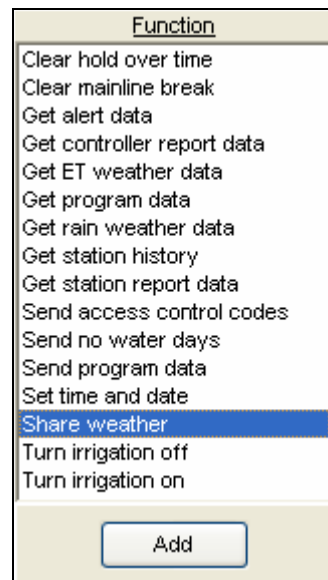
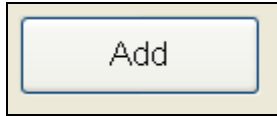


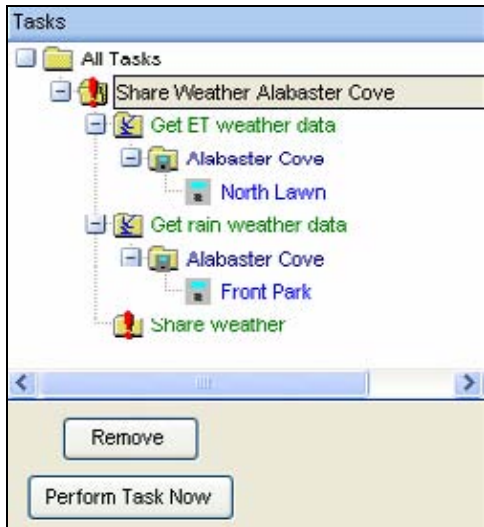
Figure 12.2.1

- Click on the **Add** button at the bottom of this window (Figure 12.2.2).



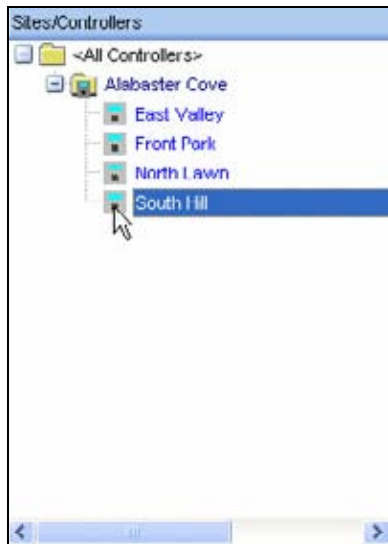
**Figure 12.2.2**

- This will add the **Share weather** function to the task that you are currently building (Figure 12.2.3).



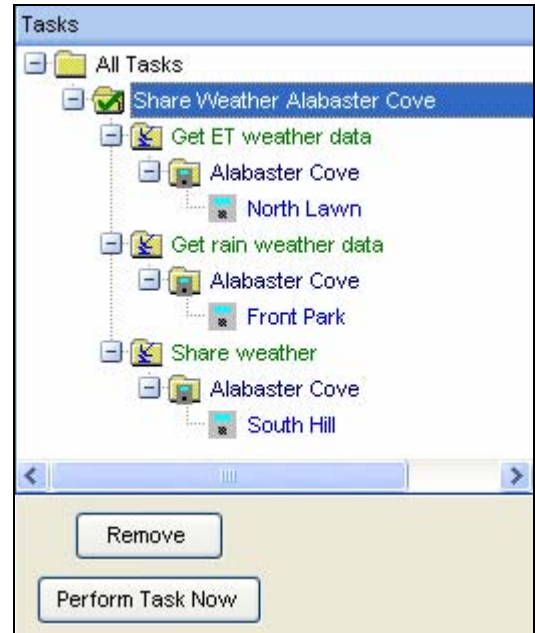
**Figure 12.2.3**

- Now you want to add the controller(s) that you want to share the weather information with. Select the controller(s) from the “**Site Controller**” window (Figure 12.2.4).



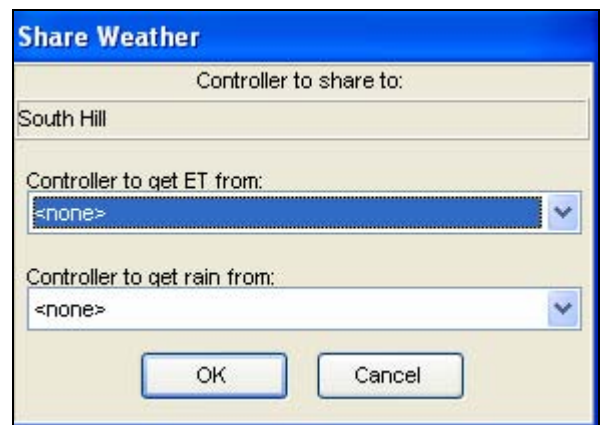
**Figure 12.2.4**

- Then left click on the controller holding down the mouse button drag and drop the controller(s) into the **Share weather** folder (Figure 12.2.5).



**Figure 12.2.5**

- A window will appear asking you for the controller that you are getting ET from and the controller that you are getting the Rain from. Enter the appropriate controllers by using the drop down arrows to the right of the boxes (Figure 12.2.6).



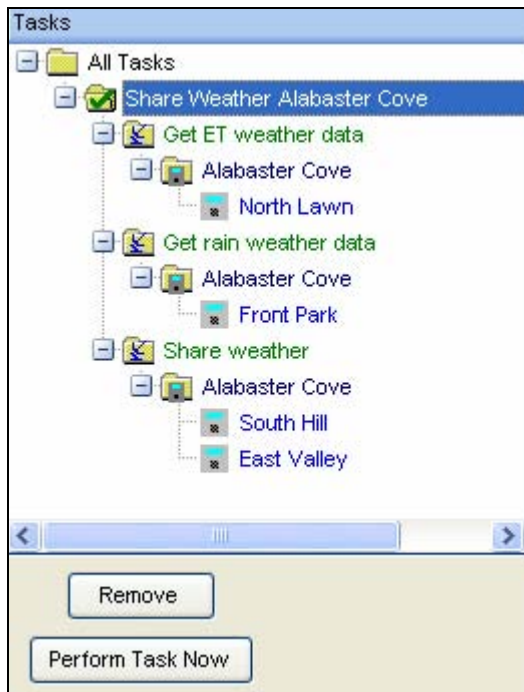
**Figure 12.2.6**

- Click on the **OK** button when you have entered the appropriate answers.

**Note:** If you are using a weather station for weather information (see section 10), and have already set it up, the weather station will appear in the drop down window for “**Controllers to Get ET from:**” and also “**Controllers to get Rain from:**” shown as CR510 (Figure 12.2.6).

**Note:** Click on **Cancel** if you do not want to save these entries.

- Repeat this step for each controller that you want to add to the list. Each controller will appear under the **Share weather** folder in the **Task** window (Figure 12.2.7).



**Figure 12.2.7**

**Note:** Notice that the **RED** exclamation points in the **Share weather** folders have all changed to a **GREEN** check mark. This lets you know that the task has been entered properly.

- Now you will want to schedule this task so that it will take place on a regular time schedule.

**SEE SECTION 11.1 FOR TASK SCHEDULING**



