

13.0 RAIN POLLING SETUP

Rain Polling is a central function used to poll a controller(s) with a RB-1 Tipping Rain Bucket or to poll the databases established with a weather station. During polling, when the rain minimum is crossed the central will contact all controllers in the weather share group and **STOP** all current running and scheduled irrigation for that ET day.

Note: Rain polling must be turned on by a Field Representative prior to following these steps. Call Calsense at 1-(800)-572-8608. If it is **not**, Rain Polling setup will not be available under Setup in the toolbar.

1. In the upper toolbar select **Setup** and then scroll down to **Rain Polling** and click on it (Figure 13.0.1).

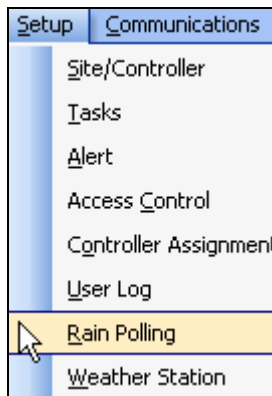


Figure 13.0.1

Note: This will take you to the “**Rain Polling**” screen (Figure 13.0.2).

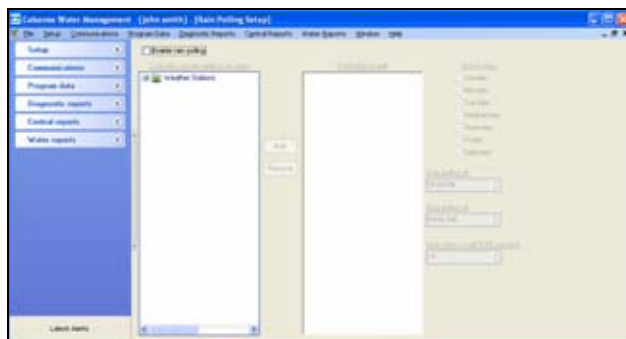


Figure 13.0.2

Note: Only controllers that have been setup to get rain weather data in a weather sharing task will appear in the **Controller you are getting rain from** column.

SEE SECTION 12.0 FOR SETTING UP WEATHER SHARING.

2. Click on the **Enable rain polling** button. This will enable the information windows on this screen (Figure 13.0.3).

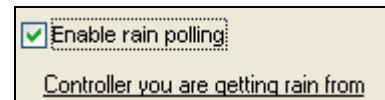


Figure 13.0.3

Note: All of the controllers from your “**Sites / Controllers**” window that have a task set up to “**Get rain weather data**” will show up on the “**Controller you are getting rain from**” list (Figure 13.0.4).

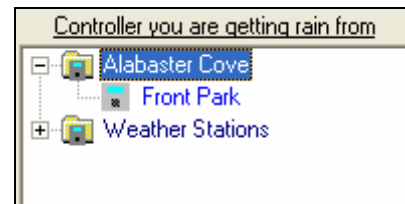


Figure 13.0.4

3. To add controllers to the “**Controllers to poll**” window highlight the controllers one at a time in the “**Controllers you are getting rain from**” window and click on the **Add** button (Figure 13.0.5).

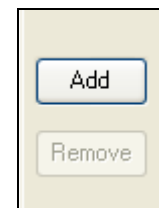


Figure 13.0.5

4. If you want to remove a controller just use the same method by highlighting the controller in the “**Controllers to poll**” window and click on the **Remove** button (Figure 13.0.6).

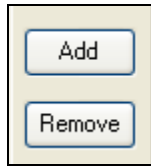


Figure 13.0.6

- Once you have finished adding your controllers to the “**Controllers to poll**” list you will have to set up the days in which you want the controllers to be polled.
- In the “**Which Days**” section of the screen turn on the days that you want to poll on by checking the appropriate box next to the day (Figure 13.0.7).

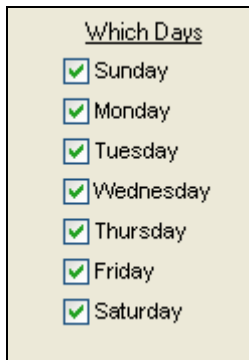


Figure 13.0.7

- Next you will need to select a time period that you want to Poll the selected controllers. First select a “**Start polling at:**” by using the pull down arrows to the right of the “**Start polling at:**” box (Figure 13.0.8).

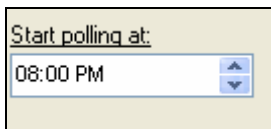


Figure 13.0.8

Note: You can also change the time in this box by highlighting the box and typing in the time that you want.

- Select a “**Stop Polling at:**” time by using the pull down arrows to the right of the “**Stop Polling at:**” box (Figure 13.0.9).

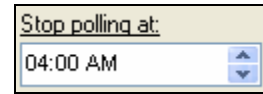


Figure 13.0.9

- The last step in the process is selecting a rain polling cycle. In the “**How often to call (5-60 minutes)**” box choose a time cycle that you want this task to be performed at. This will determine how many times the task will start every hour between the start polling time and the stop polling time (Figure 13.0.10).

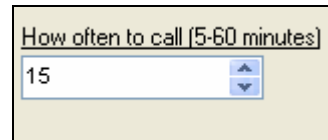



Figure 13.0.10

- You can check to make sure that the task has been scheduled by right clicking on the communications globe icon  in the lower right system tray.

- Select **View** (Figure 13.0.11).



Figure 13.0.11

Note: The “**View**” window will appear with all of your scheduled tasks for that day (Figure 13.0.12).

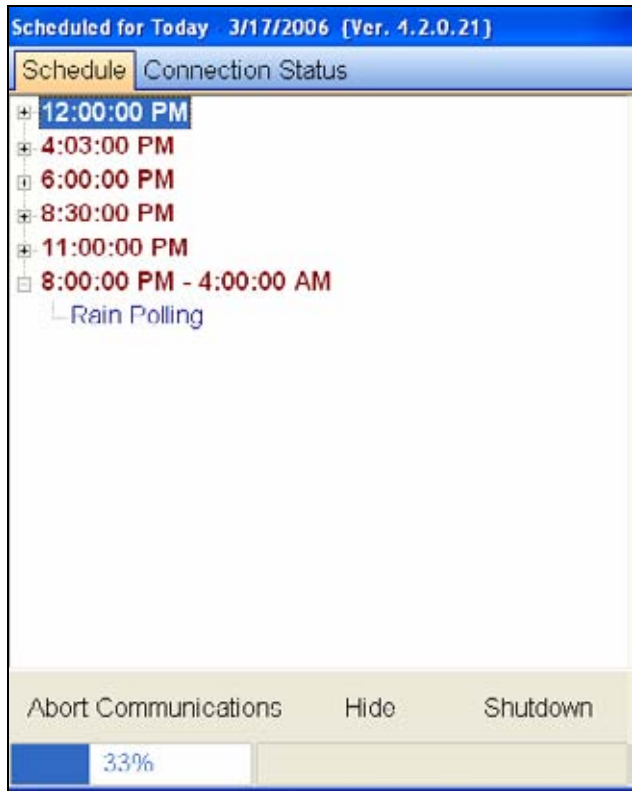
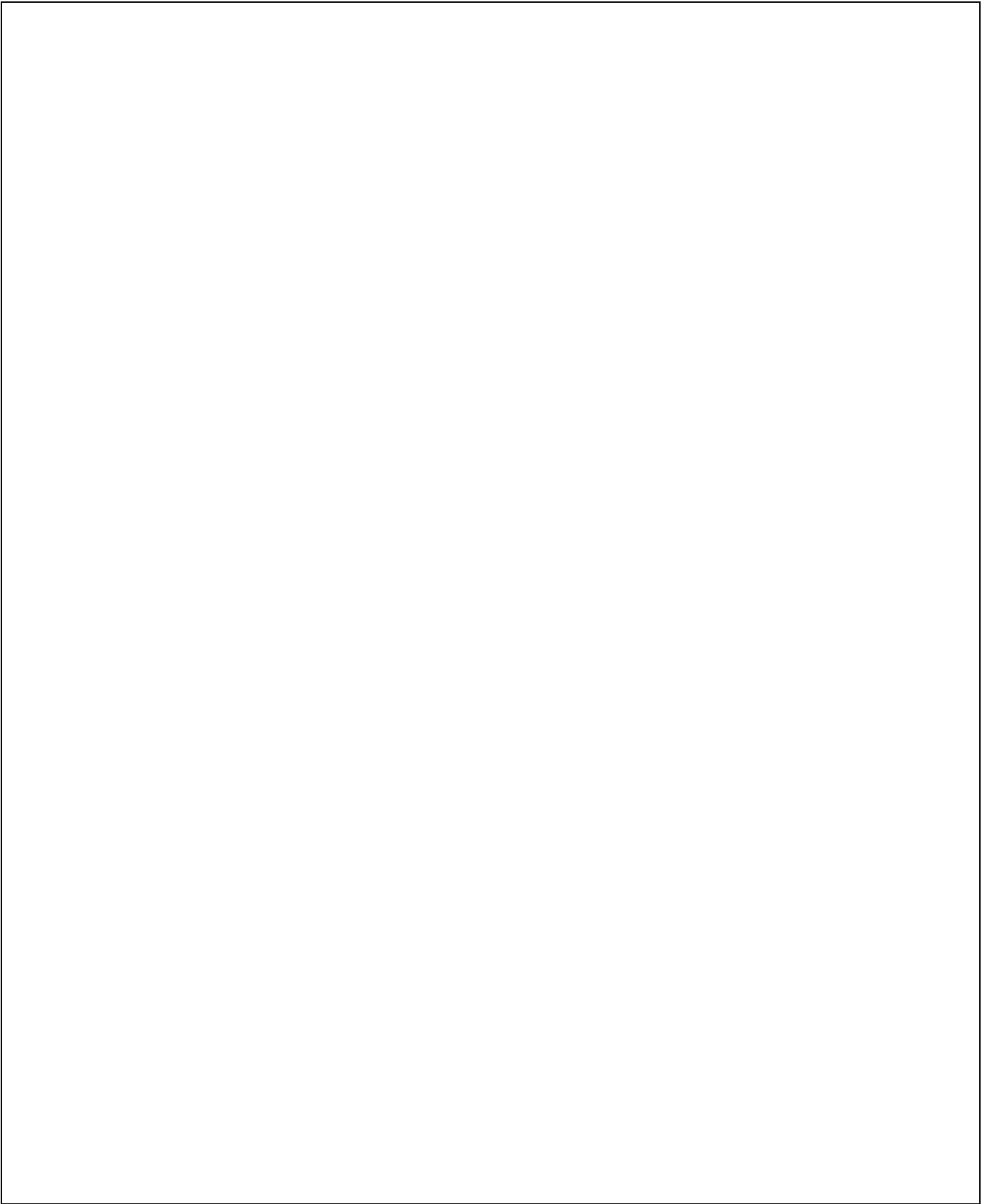


Figure 13.0.12

12. The Rain Polling task will show up in this window. Use the "+" symbol next to the times to see the task name.
13. Click the **Hide** button to close this window.

Note: The controllers that the "Rain Polling" task shares with, is dictated by the controllers that you are already "Sharing Weather" with.
 An "S" entry will show up on the rain table for rain data that is shared from other controllers.





making water work

since 1986

