

14.0 WINTER SHUTDOWN

Winter Shutdown is a temporary program which replaces the controller's normal program. The controller's normal program is saved on the central computer. Winter Shutdown provides a way for the controller to exercise the irrigation valves that would normally not be used over a long period of time.

CAUTION:

Winter Shutdown should not be used in areas where the irrigation system is winterized due to freezing temperatures and snow.

Note: When a client server environment is used, where multiple central computers are used to communicate to the same field controllers, only the central computer sending the Winter Shutdown can terminate the Winter Shutdown program.

1. From the toolbar at the top of the screen select **Communications** then scroll down to **Winter Shutdown** and click on it (Figure 14.0.1).



Figure 14.0.1

Note: This will take you to the "Winter Shutdown" screen (Figure 14.0.2).

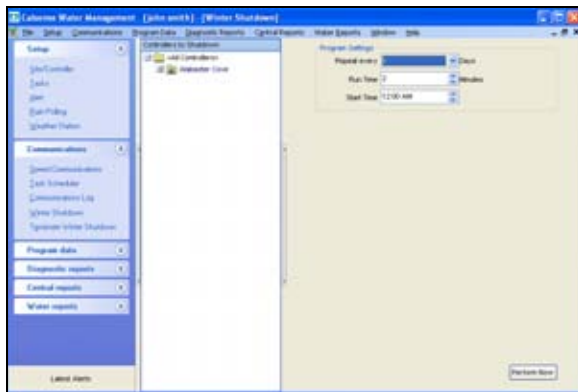


Figure 14.0.2

2. Select a Site(s) or Controller(s) to convert to Winter Shutdown (Figure 14.0.3).

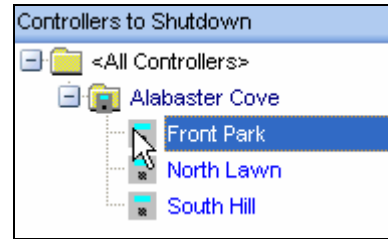


Figure 14.0.3

3. Next you will have to fill in the Program Settings (Figure 14.0.4).

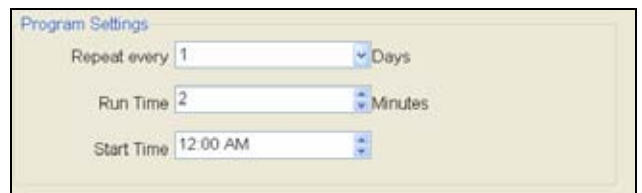


Figure 14.0.4

4. Click on the drop down arrow to the right of the **Repeat every** box to adjust the exercise days. This will allow you to select the day cycle at which the task takes place (Figure 14.0.5).



Figure 14.0.5

5. Next click on the **Run Time** block and use the **UP** and **DOWN** arrows to adjust the time in minutes for **each** station to run (Figure 14.0.6).



Figure 14.0.6

- Now click on the **Start Time** box. Use the **UP** and **DOWN** arrows to adjust the time that you want the program to start each day (Figure 14.0.7).

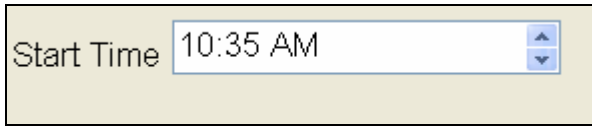


Figure 14.0.7

Note: You can also adjust the time by clicking on the box and typing the time in.

- Once you have entered all of the information that you want to go to the controller click on the **Perform Now** button (Figure 14.0.8).

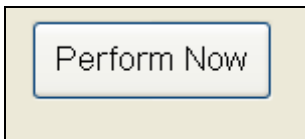


Figure 14.0.8

Note: A communications screen will appear letting you know that you are communicating with the controller of choice (Figure 14.0.9).

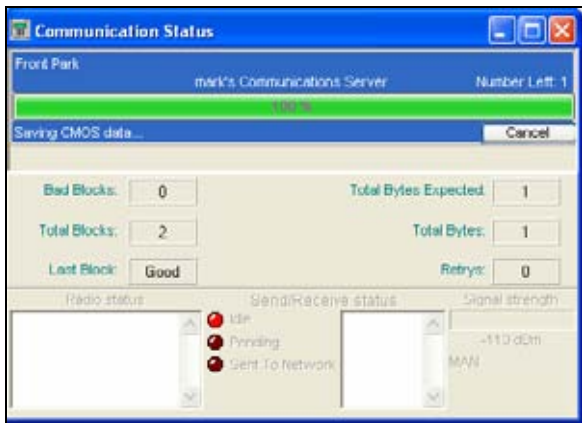


Figure 14.0.9

- After the communications task has taken place the **"Communications Completed"** screen will appear (Figure 14.0.10).

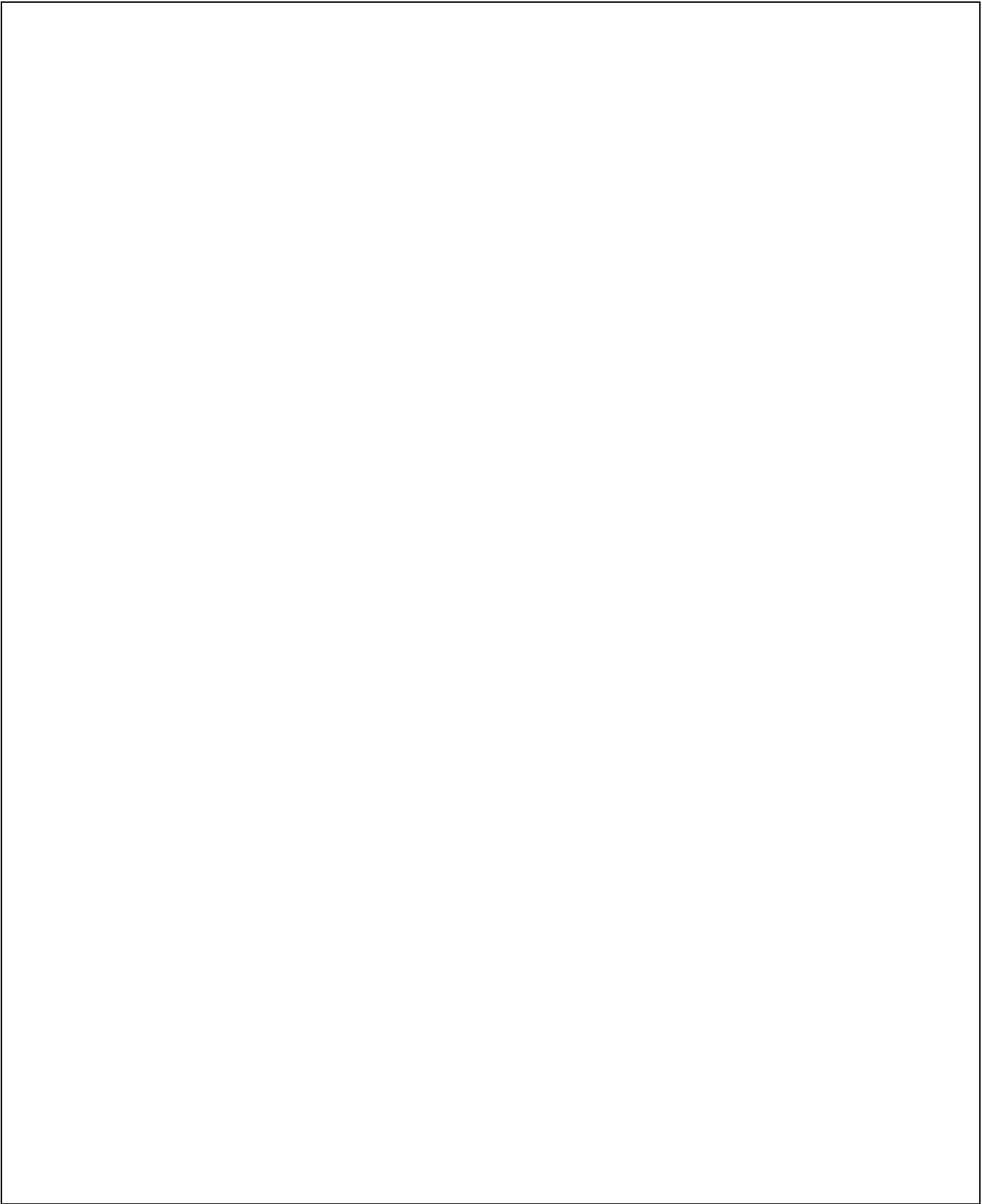


Figure 14.0.10

- Click on the **OK** button.

Note: This process will get your Program Data from the controller and store it. Then replace it with the schedule that you just entered. If you want to end this schedule and replace it with your current Program Data:

SEE SECTION 15.0 FOR MORE DETAILS



making water work

since 1986