

15.0 TERMINATE WINTER SHUTDOWN

Terminate Winter Shutdown is designed to bring a controller back up to a regular program status from the Winter Shutdown mode of operation.

1. From the toolbar at the top of the screen select **Communications** then scroll down to **Terminate Winter Shutdown** and click on it (Figure 15.0.1).



Figure 15.0.1

Note: This will take you to the “**Terminate Winter Shutdown**” screen (Figure 15.0.2).

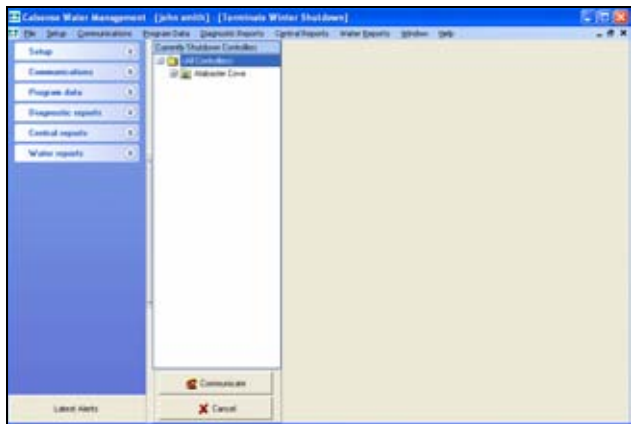


Figure 15.0.2

2. Select an entire site or select a single Controller to convert back from Winter Shutdown (Figure 15.0.3).



Figure 15.0.3

3. Next click on the **Communicate** button at the bottom of this screen (Figure 15.0.4).

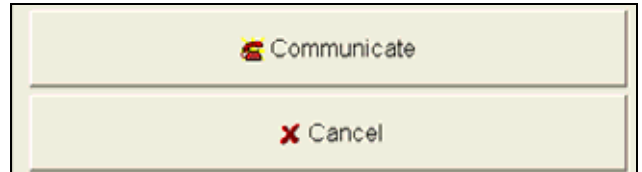


Figure 15.0.4

Note: Click on the **Cancel** button if you do not want to continue with this process.

Note: A communications screen will appear letting you know that you are communicating with the controller of choice (Figure 15.0.5).



Figure 15.0.5

Note: After the communications task has taken place the “**Communications Completed**” screen will appear (Figure 15.0.6).



Figure 15.0.6

4. Click on the **OK** button.

Note: This process will send your original Program Data back to the entire site or single controller, and terminate the Winter Shutdown schedule.



