

19.0 COMMUNICATIONS LOG

The Communications Log is a historical listing of all communications made by the user. This listing can be used to see if communications were successful, or unsuccessful.

1. In the toolbar at the top of the screen select **Communications** then scroll down to **Communications Log** and click on it (Figure 19.0.1).

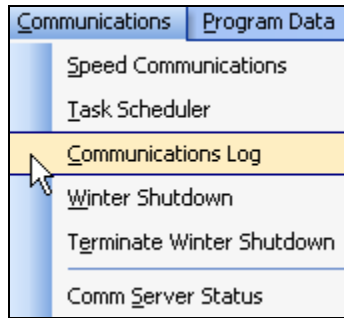


Figure 19.0.1

Note: This will take you to the “**Communications Log**” screen (Figure 19.0.2).

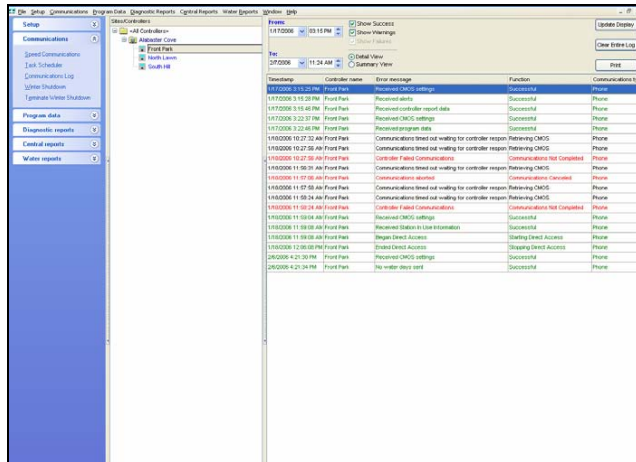


Figure 19.0.2

SEE LAST PAGE FOR FULL SCREEN SHOT OF REPORT

2. Select a controller from the controller listing (Figure 19.0.3).

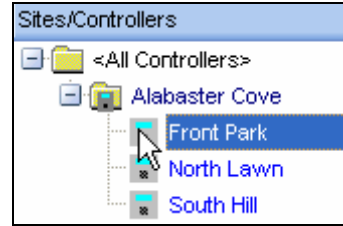


Figure 19.0.3

3. Next enter a **From:** date using the drop down arrow (Figure 19.0.4).

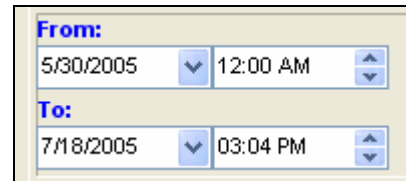


Figure 19.0.4

Note: This will open up the **calendar** window (Figure 19.0.5).

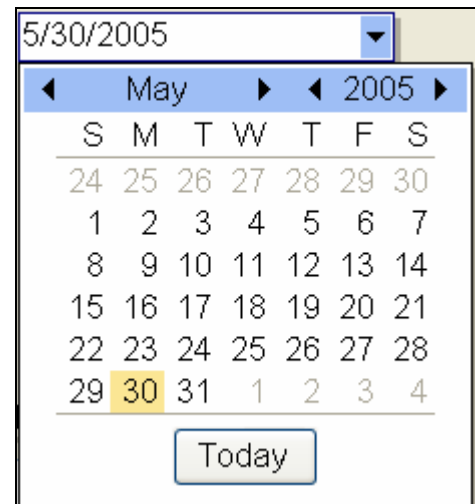


Figure 19.0.5

Note: Use the **BLACK** arrows to adjust the **MONTH** and **YEAR** or click on the **Today** button to set the date for today's date.

4. Next change the **Time** box by using the **UP** and **Down** arrows, or just click on the box and type in the time that you want (Figure 19.0.6).

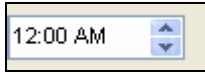


Figure 19.0.6

Note: Use the same method to change the **To:** box, and also the time.

Show Success: Checking this box will allow you to view all successful communications within the date range specified (Figure 19.0.7)

Show Warnings: Checking this box will allow you to view any negative event that took place during a communication (Figure 19.0.7).

Show Failures: This box is permanently checked and cannot be unchecked. It will allow you to view all failed communications within the date range specified (Figure 19.0.7).

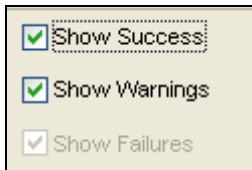


Figure 19.0.7

Detailed View: Selecting this option will allow you to view the following columns of information: (Figure 19.0.8).

- **Time stamp:** This is the date and time that the controller was communicated to.
- **Controller name:** This is the name that you have assigned to this controller.
- **Error message:** This column will show a brief description of the action that took place.
- **Function:** This column will show a brief description of what caused the action in the error message column to take place.
- **Communications Type:** This is the type of communications used to contact this controller.
- **ROM version:** This is the current Read Only Memory (R.O.M.) Chip installed in this controller.

- **Model:** This is the model number of the controller.
- **User name:** This is the name of the user that attempted the communication.
- **Communications Server:** This is the name of the communications server used to communicate with this controller.

Summary View: Selecting this option will allow you to view the following columns of information: (Figure 19.0.8).

- **Time stamp:** This is the date and time that the controller was communicated to.
- **Controller name:** This is the name that you have assigned to this controller.
- **Task:** This is a brief description of what was requested, or sent.
- **Communications Server:** This is the name of the communications server used to communicate with this controller.
- **User name:** This is the name of the user that attempted the communication.

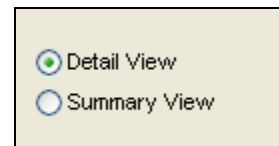


Figure 19.0.8

Update Display: Click on this button any time that you change the date range or make any adjustments to the viewing criteria (Figure 19.0.9).

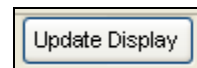


Figure 19.0.9

Clear Entire Log: This will delete all entries in the communications log for this user from present time back (Figure 19.0.10).

CAUTION:

Once these entries have been deleted they cannot be recovered.

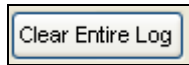


Figure 19.0.10

Print: Clicking this button will allow you to print your Communications Log entries (Figure 19.0.11).

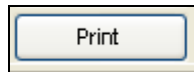


Figure 19.0.11

Note: This will take you to the "Print" screen (Figure 19.0.12).

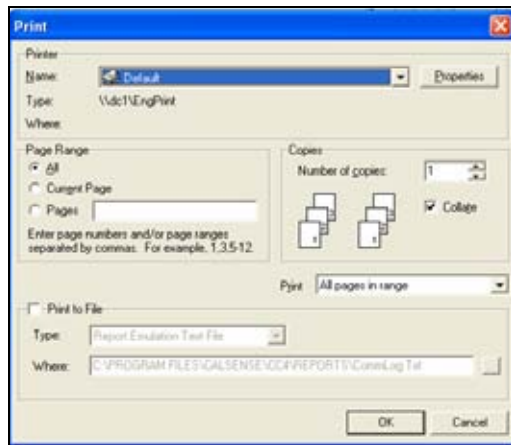


Figure 19.0.12

Timestamp	Controller name	Error message	Function	Communications type
1/17/2006 3:15:25 PM	Front Park	Received CMOS settings	Successful	Phone
1/17/2006 3:15:28 PM	Front Park	Received alerts	Successful	Phone
1/17/2006 3:15:48 PM	Front Park	Received controller report data	Successful	Phone
1/17/2006 3:22:37 PM	Front Park	Received CMOS settings	Successful	Phone
1/17/2006 3:22:48 PM	Front Park	Received program data	Successful	Phone
1/18/2006 10:27:32 AM	Front Park	Communications timed out waiting for controller respon	Retrieving CMOS	Phone
1/18/2006 10:27:56 AM	Front Park	Communications timed out waiting for controller respon	Retrieving CMOS	Phone
1/18/2006 10:27:56 AM	Front Park	Controller Failed Communications	Communications Not Completed	Phone
1/18/2006 11:56:31 AM	Front Park	Communications timed out waiting for controller respon	Retrieving CMOS	Phone
1/18/2006 11:57:06 AM	Front Park	Communications aborted	Communications Canceled	Phone
1/18/2006 11:57:58 AM	Front Park	Communications timed out waiting for controller respon	Retrieving CMOS	Phone
1/18/2006 11:58:24 AM	Front Park	Communications timed out waiting for controller respon	Retrieving CMOS	Phone
1/18/2006 11:58:24 AM	Front Park	Controller Failed Communications	Communications Not Completed	Phone
1/18/2006 11:59:04 AM	Front Park	Received CMOS settings	Successful	Phone
1/18/2006 11:59:08 AM	Front Park	Received Station In Use Information	Successful	Phone
1/18/2006 11:59:08 AM	Front Park	Began Direct Access	Starting Direct Access	Phone
1/18/2006 12:00:00 PM	Front Park	Ended Direct Access	Stopping Direct Access	Phone
2/6/2006 4:21:30 PM	Front Park	Received CMOS settings	Successful	Phone
2/6/2006 4:21:34 PM	Front Park	No water days sent	Successful	Phone

--



making water work

since 1986