

2.0 PREFERENCES

The Preferences area of Command Center is used to enter all of the users information, Choose to compare ET values, set chart and report colors, miscellaneous information, Communication preferences, and client server setup.

1. In the toolbar at the top of the screen select **File** and then scroll down to the word **Preferences** and click on it (Figure 2.0.1).

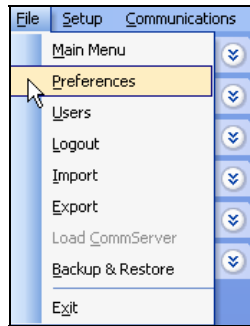


Figure 2.0.1

Note: This will bring you to the “**Preferences**” screen.

USER INFORMATION TAB

1. Click on the **User’s Information** tab (Figure 2.0.2).

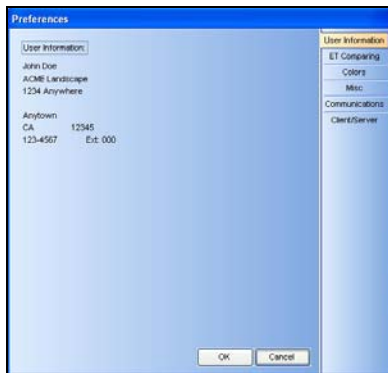


Figure 2.0.2

User Information: The User Information is used to identify the user who is currently logged into Command Center. This information cannot be edited

from this screen. It can only be edited from the “**User Information / User Details**” screen.

Note: (See Section 1.2). This information will appear in the header of all printable reports generated by Command Center.

Note: The current logged in users name will appear in the alert lines whenever communicating to an ET2000 500 series or ET2000e controller.

3. When finished viewing this area click on the **OK** button.

ET COMPARING TAB

1. Click on the **ET Comparing** tab (Figure 2.0.3).

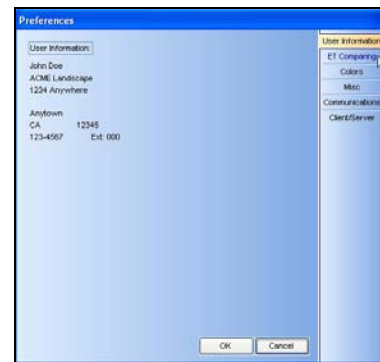


Figure 2.0.3

Note: This will take you to the “**Preferences**” screen for ET comparing (Figure 2.0.4).

Note: You must be logged in as an administrator to edit any information on this screen.

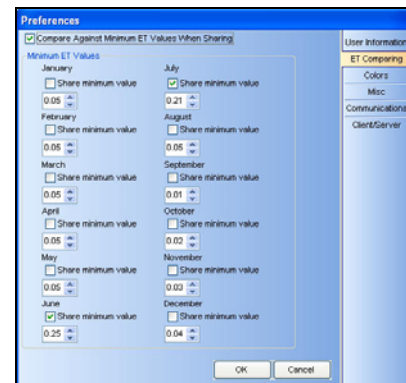


Figure 2.0.4

Compare Against Minimum ET Values When Sharing: Checking this box tells Command Center to compare the actual gage readings to the user specified minimum values.

Share Minimum Value: Checking a “**Share Minimum Value**” box will compare the actual gage reading to the minimum value set. If the gage reading is less than the minimum value, the minimum value will be used.

Note: The “**Compare Against Minimum ET Values When Sharing**” box. If the share minimum value is **not** checked the Central will share all ET Gage numbers down to 0.00. If checked the Central will never share an ET value below what you have set as the minimum for each month.

- When finished with this section click on the **OK** button to save new data.

Note: If you do not want to save any changes made in this area click on the **Cancel** button.

COLORS TAB

This screen is where you set up Communication Success, Warning and Failure Colors: These communication events are linked to the “**Communications Log**” under “**Central Reports**” and “**Communications**”. This is a log of the communications between the central computer and field controllers.

Also this screen is where you setup Actual Usage, Actual Budget, and Adjustment Budget colors: these colors are used in generated water reports.

Choosing different color schemes makes for easy identification of successes, warnings and failed communications while viewing the communication log.

- Click on the **Colors** tab (Figure 2.0.5).

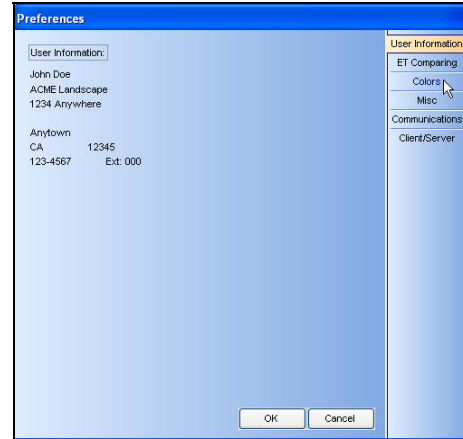


Figure 2.0.5

Note: This will take you to the “**Preferences**” screen for colors (Figure 2.0.6).

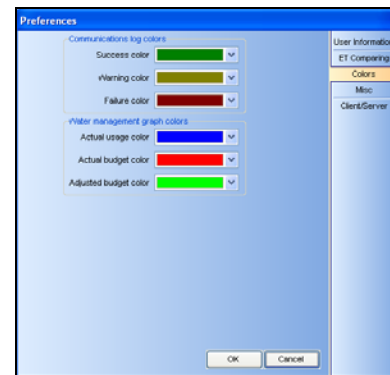


Figure 2.0.6

Water Management Graph Colors: There are twenty-two different colors to choose from. The colors selected will help in reading the graphs on the screen or when they are printed.

Note: Each color selected will denote the condition directly across from it when displayed on reports.

- When finished with this section click on the **OK** button to save new data.

Note: If you do not want to save any changes made in this area click on the **Cancel** button.

MISC TAB

1. Click on the **Misc** tab (Figure 2.0.7).

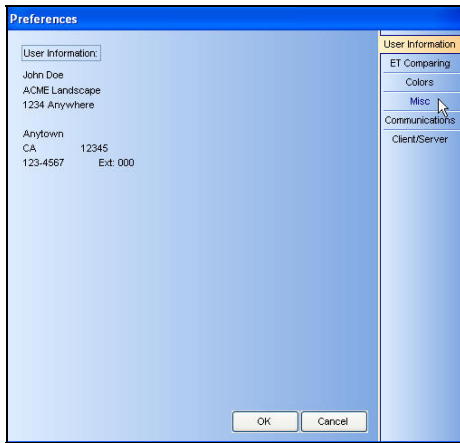


Figure 2.0.7

Note: This will take you to the “Preference” screen for Miscellaneous (Figure 2.0.8).

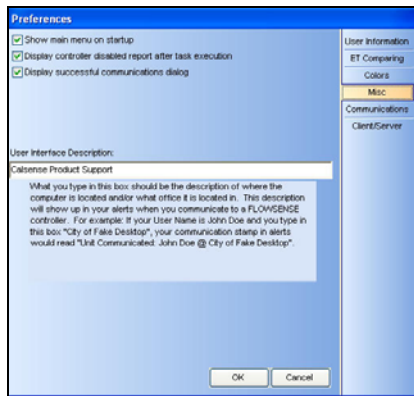


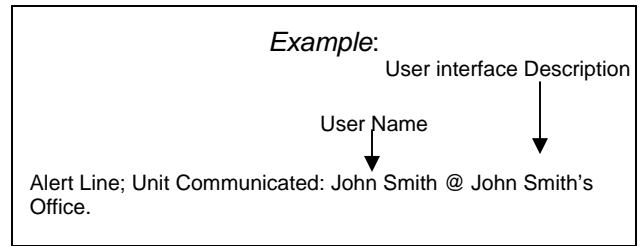
Figure 2.0.8

Show main menu on startup: Checking this box will display the six navigation buttons that include Setup, Communications, Program Data, Diagnostic Reports, Central Reports and Water Reports.

Display controller disabled report after task execution: Checking this box will display an alert after a task and will list any controller that has the “Communications Enabled” box unchecked in the “Site/Controller” list.

Display successful communications dialog: Checking this box will show a dialog box showing completely unimpeded communications. Having this box unchecked will cause the “Completed Communications” dialog box not to appear.

User Interface Description: The description that is entered here should be the description of where the computer is located and/or what office it is located in. The following description will appear in the alert lines of an ET2000 (500 series controller) whenever a communications to the controller has occurred.



COMMUNICATIONS TAB

2. Click on the **Communications** tab (Figure 2.0.9).

Note: This will take you to the “Communications” screen for Miscellaneous (Figure 2.0.9).

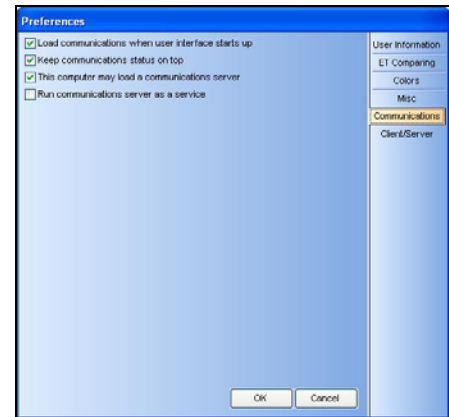


Figure 2.0.9

Load communications when user interface starts up: Checking this box will automatically load the communications scheduler upon start up of Command Center.

Keep communications status on top: Checking this box will keep the communications status box on top of all applications running at the same time. Un-checking this box will put the status box under the current applications running.

This computer may load a communications server: Under the Client Server environment a computer can run only the UI, checking the box will load the communications server. Un-checking the box will not load the communication server. In a non-Client Server (Local) environment this line will be checked and grayed out.

Run Communications server as a Service:

This setting will load the communications server as a service rather than an application. Services differ from applications in that they are started when Windows first boots up, rather than when a user logs in. This means that Tasks will execute whether a user is logged in or not. There have been cases in the past where Tasks would not fire off because a computer was restarted but no one was logged in. Running the communications server as a service will prevent this problem from occurring.

CLIENT / SERVER TAB

1. Click on the **Client / Server** tab (Figure 2.0.9).



Figure 2.0.9

Note: This will take you to the “Preference” screen for Client / Server (Figure 2.0.10).

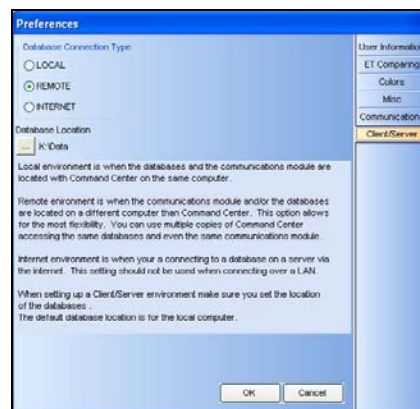


Figure 2.0.10

Client Server: Allows multiple users on different computers to access the same database stored at a shared location.

Database Connection Type:

- **LOCAL:** The Local environment is used when the databases and the communications module are located with Command Center on the same computer.
- **REMOTE:** The Remote environment is when the databases are stored at a shared location. Selecting **REMOTE** requires the purchase of Advantage Database Server software which is protected by copyright laws and is not to be installed without prior approval from Calsense. The setup of the server software requires the assistance of the customers IT department.
- **INTERNET:** The Internet environment is used for systems that are not physically connected to the network that the databases are stored on. It allows a user to remotely access the shared databases and retrieve stored information or use other computers to contact controllers. Selecting **INTERNET** requires that a system running the Advantage Database Server software is already running and accessible via the Internet.

Note: If you are running in Client Server mode and unable to run in the **REMOTE** setting contact Calsense for assistance.

Database Location: Click on the **browser** button this will take you to the “**Browse for Folder**” screen. This allows you to identify where your database is located (Figure 2.0.11).

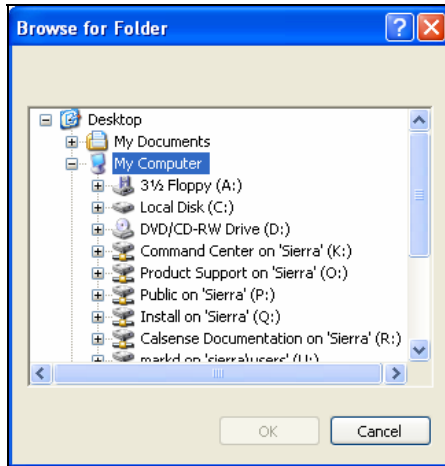


Figure 2.0.11

2. Once located click on the **OK** button.

Note: If you do not want to select a location click on the **Cancel** button to exit out of this screen.

--	--



