

26.0 WATER MANAGEMENT

Water Management: The Water Management report details monthly water usage and budget numbers, in an easy to read information column, and graph / chart format.

1. From the toolbar at the top of the screen select **Water Reports** then scroll down to **Water Management** and click on it (Figure 26.0.1).



Figure 26.0.1

Note: This will take you to the “**Water Management**” screen (Figure 26.0.2).

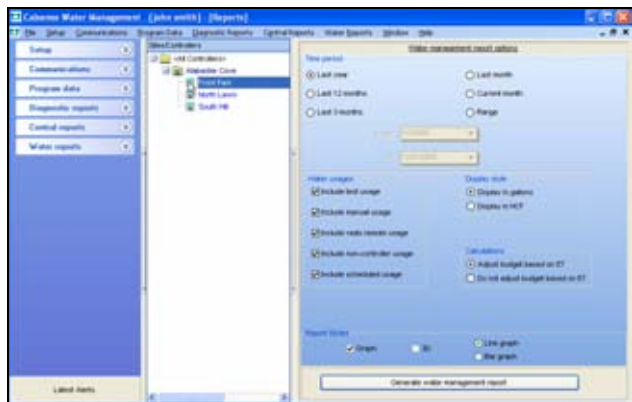


Figure 26.0.2

2. Next Click on a controller from your controller list to highlight it (Figure 26.0.3).

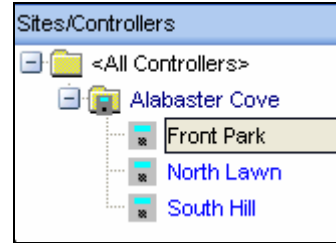


Figure 26.0.3

Time Period: This allows you to select a range of time by selecting from one of the six choices below (Figure 26.0.4).



Figure 26.0.4

Last year: This will allow you to select a date range from January 1st to December 31st of the last calendar year.

Last 12 months: This will allow you to select a date range for the last 12 calendar months.

Last 3 months: This will allow you to select a date range for the last three calendar months.

Last month: This will allow you to select a date range for the last calendar month.

Current month: This will allow you to select a date range from the first day of this month until the last day of this month.

Range: This allows you to select a specific date range with a set start date and set finish date.

Note: This will open up the date range boxes directly below the **Range** button (Figure 26.0.5).



Figure 26.0.5

- Click on the drop down arrow to select a date. This will reveal the calendar to choose a specific date (Figure 26.0.6).

Figure 26.0.6

Note: Use the **BLACK** arrows to adjust the **MONTH** and **YEAR** or click on the **Today** button to set the date for today's date.

- Next click on the box for each item from the **Water Usages** list that you would like to include in your report (Figure 26.0.7).

Figure 26.0.7

- In the **Display style** section click on the appropriate box for the following (Figure 26.0.8).

Display in gallons: This will display all water totals in gallons.

Display in HCF: This will display all water totals in hundreds of cubic feet.

Figure 26.0.8

- In the **Calculations** section click on the appropriate box for the following (Figure 26.0.9).

Adjust Budget based on ET: This will show all calculations based on ET.

Do Not Adjust budgets based on ET: This will calculate your report by not using ET information.

Calculations

Adjust budget based on ET

Do not adjust budget based on ET

Figure 26.0.9

- Next choose from the **Report Styles** section the style of report that you want (Figure 26.0.10).

Report Styles

Graph 3D Line graph

Bar graph

Figure 26.0.10

Graph: This will display your report in graph format.

3D: This will display your report in a three dimensional format.

Line Graph: This will show your report in line graph format.

Bar Graph: This will show your report in bar graph format.

- Click on the **Generate water management report** button to view Water Usage report (Figure 26.0.11).

Generate water management report

Figure 26.0.11

26.1 WATER MANAGEMENT REPORT

Note: This will take you to the “**Water Management**” report screen (Figure 26.1.1).

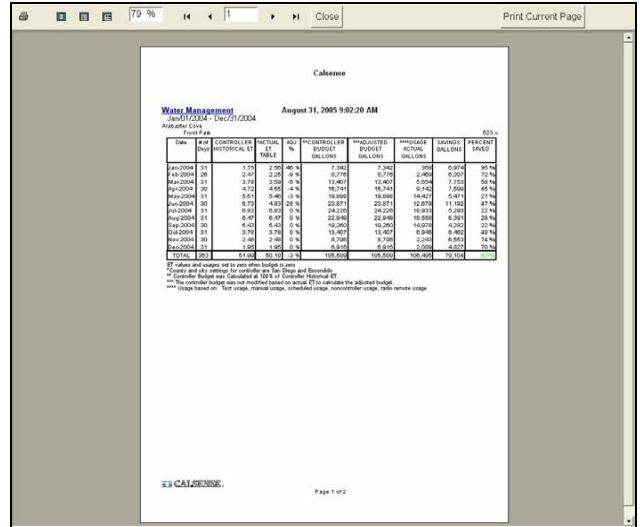


Figure 26.1.1

SEE “HOW TO PRINT REPORTS” SECTION FOR MORE INFORMATION.

SEE LAST PAGE OF THIS SECTION FOR FULL PAGE REPORT.

26.2 WATER MANAGEMENT REPORT CONTENTS

The following is a list of every item on the “**Water Management**” Report (Figure 26.1.1).

Date and Time: This shows the date and time that you requested the report. If you decide to print the report this gives you a way in which to file chronologically.

Report Title: This is the title of the report that you are currently viewing.

Site Name: Each site name will appear to the left of the list in regular font.

Controller Name: The controller names will be listed directly under the site that they are a part of. They will appear in alpha-numeric sequence and are in regular font.

ROM Version: This will show up on the right hand side of the screen. Should be a three digit number followed by a period and an alphabetical letter. This will tell you the current (Read Only Memory) chip version that this controller is running on.

Start Date : This is the date and time that the irrigation occurred.

of Days: This shows you the total days for that particular month.

Controller Historical ET: This is the historical ET for this controller for the month shown.

Actual ET Table: This is the actual ET for this controller for the month shown.

ADJ%: This is the difference in percent between historical ET and Actual ET for that particular month.

Controller Budget (HCF / Gal): This is the budget amount in hundreds of cubic feet or gallons that were budgeted for that month.

Adjusted Budget (HCF / Gal): This is the budget based on actual ET in hundreds of cubic feet or gallons that were budgeted for the month.

Usage Actual (HCF / Gal): Shows actual water usage in hundreds of cubic feet or gallons for that month.

Savings: (HCF / Gal): This shows you the total amount of water in hundreds of cubic feet or in gallons that you were able to save for that month.

Percent Saved: This is the percent of water that you saved for that month.

Total: This row will give you the totals for each individual column.



79 % | 1 | Close | Print Current Page

Calsense

Water Management August 31, 2005 9:02:20 AM
 Jan/01/2004 - Dec/31/2004
 Alabaster Cove Front Pak 623 x

Date	# of Days	CONTROLLER HISTORICAL ET	ACTUAL ET TABLE	ADJ %	**CONTROLLER BUDGET GALLONS	**ADJUSTED BUDGET GALLONS	***USAGE ACTUAL GALLONS	SAVINGS GALLONS	PERCENT SAVED
Jan-2004	31	1.75	2.50	40 %	7,342	7,342	308	6,974	95 %
Feb-2004	28	2.47	2.25	-9 %	0,776	0,776	2,469	6,207	72 %
Mar-2004	31	3.78	3.59	-5 %	13,407	13,407	5,694	7,753	58 %
Apr-2004	30	4.72	4.55	-4 %	16,741	16,741	9,142	7,599	45 %
May-2004	31	5.01	5.40	-3 %	19,898	19,898	14,427	5,471	27 %
Jun-2004	30	6.73	4.82	-28 %	23,871	23,871	12,879	11,192	47 %
Jul-2004	31	8.83	8.83	0 %	24,226	24,226	16,933	6,293	22 %
Aug-2004	31	8.47	8.47	0 %	22,949	22,949	16,558	6,391	28 %
Sep-2004	30	6.43	6.43	0 %	19,260	19,260	14,078	4,292	22 %
Oct-2004	31	3.78	3.78	0 %	13,407	13,407	8,945	4,462	48 %
Nov-2004	30	2.48	2.48	0 %	8,706	8,706	2,243	6,463	74 %
Dec-2004	31	1.95	1.95	0 %	6,915	6,915	2,009	4,927	70 %
TOTAL	303	51.92	50.10	-2 %	195,502	195,502	106,402	79,104	40 %

ET values and usages set to zero when budget is zero.
 * County and city settings for controller are San Diego and Escondido.
 ** Controller Budget was Calculated at 100% of Controller Historical ET.
 *** The controller budget was not modified based on actual ET to calculate the adjusted budget.
 **** Usage based on: Text usage, manual usage, scheduled usage, noncontroller usage, radio remote usage.

CALSENSE Page 1 of 2

