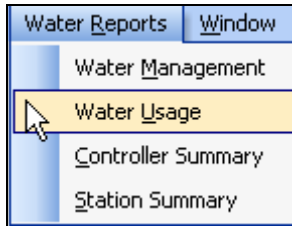


**27.0 WATER USAGE**

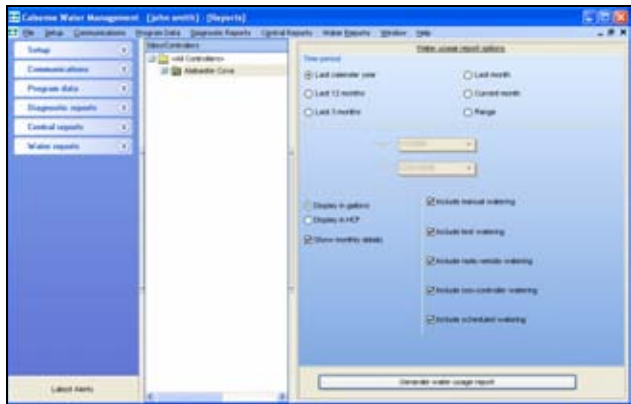
**Water Usage:** The Water Usage report shows individual monthly water usage numbers, along with ET table and rain table data for each controller selected.

- From the toolbar at the top of the screen select **Water Reports** then scroll down to **Water Usage** and click on it (Figure 27.0.1).



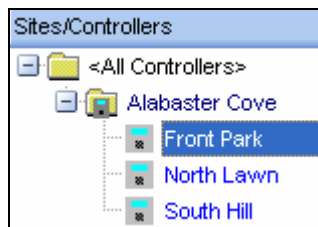
**Figure 27.0.1**

**Note:** This will take you to the “Water Usage” screen (Figure 27.0.2).



**Figure 27.0.2**

- Next click on a controller from your controller list to highlight it (Figure 27.0.3).



**Figure 27.0.3**

**Time Period:** This allows you to select a range of time by selecting from one of the six choices below (Figure 27.0.4).



**Figure 27.0.4**

**Last year:** This will allow you to select a date range from the first day of the last calendar year to the last day of the calendar year.

**Last 12 months:** This will allow you to select a date range for the last 12 calendar months.

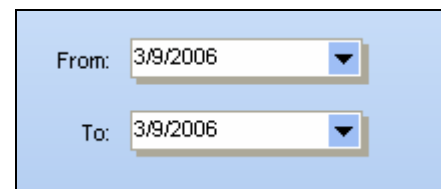
**Last 3 months:** This will allow you to select a date range for the last three calendar months.

**Last month:** This will allow you to select a date range for the last calendar month.

**Current month:** This will allow you to select a date range from the first day of this month until the last day of this month.

**Range:** This allows you to select a specific date range with a set start date and set finish date.

**Note:** This will open up the date range boxes directly below the **Range** button (Figure 27.0.5).



**Figure 27.0.5**

- Click on the drop down arrow to select a date. This will reveal the calendar to choose a specific date (Figure 27.0.6).





Figure 27.0.6

**Note:** Use the **BLACK** arrows to adjust the **MONTH** and **YEAR** or click on the **Today** button to set the date for today's date.

- Next click on the box for each item from the **Water Usages** list that you would like to include in your report (Figure 27.0.7).

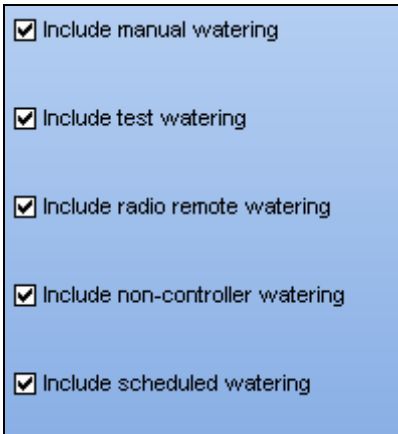


Figure 27.0.7

- In the **Display style** section click on the appropriate box for the following (Figure 27.0.8).

**Display in gallons:** This will display all water totals in gallons.

**Display in HCF:** This will display all water totals in Hundreds of Cubic feet.

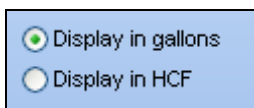


Figure 27.0.8

- Click on the **Show monthly details** button if you want your report to show calculations for each day of the month selected in the report (Figure 27.0.9).



Figure 27.0.9

- Click on the **Generate water usage report** button (Figure 27.0.10).



Figure 27.0.10

## 27.1 WATER USAGE REPORT

**Note:** This will take you to the **“Water Usage”** report screen (Figure 27.1.1).

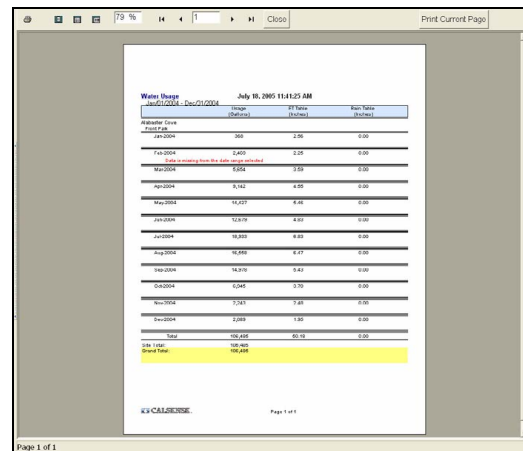


Figure 27.1.1

**SEE “HOW TO PRINT REPORTS” SECTION FOR MORE INFORMATION.**

**SEE LAST PAGE OF THIS SECTION FOR FULL PAGE REPORT.**

 **27.2 WATER USAGE REPORT CONTENTS**

The following is a list of every item on the “**Water Usage**” report (Figure 27.1.1).

**Date and Time:** This shows the date and time that you requested the report. If you decide to print the report this gives you a way in which to file chronologically.

**Report Title:** This is the title of the report that you are currently viewing.

**Site Name:** Each site name will appear to the left of the list in regular font.

**Controller Name:** The controller names will be listed directly under the site that they are a part of. They will appear in alpha-numeric sequence and are in regular font.

**Date Range:** This is the period covered by the report.

**Usage (Gallons or HCF):** This shows you the total amount of water used for each month.

**ET Table (Inches):** This shows the total inches in ET for each month.

**Rain Table (Inches):** This is the amount of rain in inches for each month.

**Total:** This is the total for each column of information.

**Site Total:** This is the total water usage for this site.

**Grand Total:** This is the water usage grand total for all sites included in this report.



79 % 1 Close Print Current Page

**Water Usage** July 18, 2005 11:41:25 AM  
 Jan/01/2004 - Dec/31/2004

	Usage (Gallons)	FT Table (Inches)	Rain Table (Inches)
<b>Alabaster Cove</b>			
<b>Front Park</b>			
Jan-2004	368	2.06	0.00
Feb-2004	2,400	2.25	0.00
<i>Data is missing from the date range selected</i>			
Mar-2004	5,654	3.59	0.00
Apr-2004	9,142	4.55	0.00
May-2004	14,427	5.46	0.00
Jun-2004	12,679	4.83	0.00
Jul-2004	18,933	6.83	0.00
Aug-2004	16,558	6.47	0.00
Sep-2004	14,978	5.43	0.00
Oct-2004	6,045	3.70	0.00
Nov-2004	2,243	2.48	0.00
Dec-2004	2,088	1.85	0.00
<b>Total</b>	<b>106,486</b>	<b>60.18</b>	<b>0.00</b>
Site Total:	106,486		
Grand Total:	106,486		

Page 1 of 1



