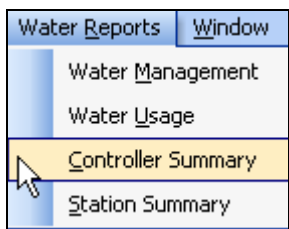


**28.0 CONTROLLER SUMMARY**

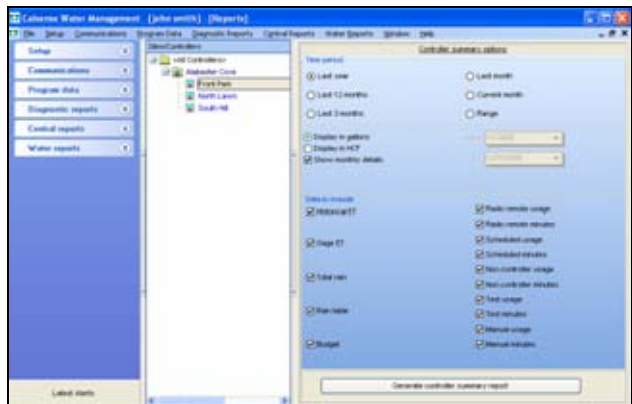
**Controller Summary:** The Controller Summary report contains individual controller monthly, or daily water usage data broken down into specific irrigation types such as Scheduled, Test, Radio Remote, etc.

1. From the toolbar at the top of the screen select **Water Reports** then scroll down to **Controller Summary** and click on it (Figure 28.0.1).



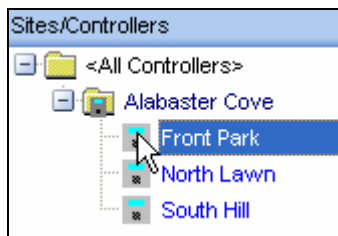
**Figure 28.0.1**

**Note:** This will take you to the “Controller Summary” screen (Figure 28.0.2).



**Figure 28.0.2**

2. Next click on a controller from your controller list to highlight it (Figure 28.0.3).



**Figure 28.0.3**

**Time Period:** This allows you to select a range of time by selecting from one of the six choices below (Figure 28.0.4).



**Figure 28.0.4**

**Last year:** This will allow you to select a date range from the first day of the last calendar year to the last day of the calendar year.

**Last 12 months:** This will allow you to select a date range for the last 12 calendar months.

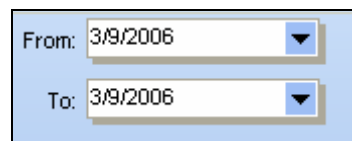
**Last 3 months:** This will allow you to select a date range for the last three calendar months.

**Last month:** This will allow you to select a date range for the last calendar month.

**Current month:** This will allow you to select a date range from the first day of this month until the last day of this month.

**Range:** This allows you to select a specific date range with a set start date and set finish date.

**Note:** This will open up the date range boxes directly below the **Range** button (Figure 28.0.5).



**Figure 28.0.5**

3. Click on the drop down arrow to select a date. This will reveal a calendar to choose a specific date (Figure 28.0.6).



Figure 28.0.6

**Note:** Use the **BLACK** arrows to adjust the **MONTH** and **YEAR** or click on the **Today** button to set the date for today's date.

- Next click on the box for each item from the **Data to Include** list that you would like to include in your report (Figure 28.0.7).



Figure 28.0.7

- In the **Display style** section click on the appropriate box for the following (Figure 28.0.8).

**Display in gallons:** This will display all water totals in gallons.

**Display in HCF:** This will display all water totals in Hundreds of Cubic feet.

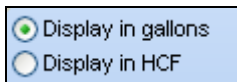


Figure 28.0.8

- Click on the **Show monthly details** button if you want your report to show Calculations for each day of the month selected in the report (Figure 28.0.9).

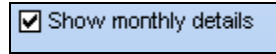


Figure 28.0.9

- Next click on the Generate controller summary report button (Figure 28.0.10)



Figure 28.0.10

## 28.1 CONTROLLER SUMMARY REPORT

**Note:** This will take you to the **“Controller Summary”** report screen (Figure 28.1.1).

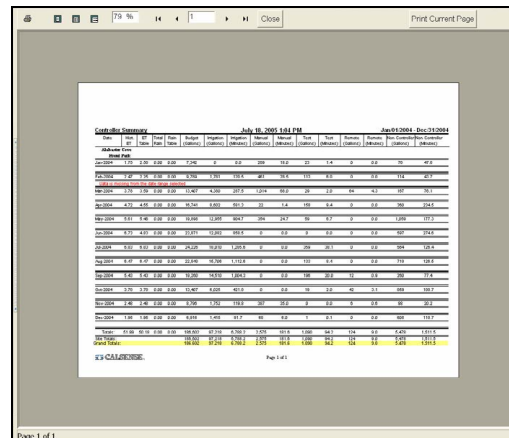


Figure 28.1.1

**SEE “HOW TO PRINT REPORTS” SECTION FOR MORE INFORMATION.**

**SEE LAST PAGE OF THIS SECTION FOR FULL PAGE REPORT.**

 **28.2 CONTROLLER SUMMARY  
REPORT CONTENTS**

The following is a list of every item on the “**Controller Summary**” Report (Figure 28.1.1).

**Date and Time:** This shows the date and time that you requested the report. If you decide to print the report this gives you a way in which to file chronologically.

**Report Title:** This is the title of the report that you are currently viewing.

**Date Range:** This is the period covered by the report.

**Site Name:** Each site name will appear to the left of the list in regular font.

**Controller Name:** The controller names will be listed directly under the site that they are a part of. They will appear in alpha-numeric sequence and are in regular font.

**Historical ET:** This is the historical ET readings for this controller for each month.

**ET Table (Inches):** This shows the total inches in ET for each month.

**Total Rain:** This is the total rain reading for this controller for each month.

**Rain Table (Inches):** This is the amount of rain in inches for each month.

**Budget (HCF or Gal):** This is the budgeted amount for this controller for each month.

**Irrigation (HCF or Gal):** This is how much water was used for this controller for each month.

**Irrigation (minutes):** This is the amount of minutes in irrigation time used by this controller for each month.

**Manual (HCF or Gal):** This is how much water was used during manual irrigation by this controller for each month.

**Manual (minutes):** This is the amount of minutes in manual irrigation used by this controller for each month.

**Test (HCF or Gal):** This is how much water was used for test by this controller for each month.

**Test (minutes):** This is the amount of minutes in test irrigation used by this controller for each month.

**Remote (HCF or Gal):** This is the amount of water used while irrigating using a Calsense Radio Remote.

**Remote (minutes):** This is the amount of minutes used while irrigating using a Calsense Radio Remote.

**Non-controller (HCF or Gal):** This is the amount of water used in non-irrigation by this controller for each month.

**Non-controller (minutes):** This is the amount of time in minutes used for non-irrigation by this controller for each month.

**Totals:** This is the total for each column of information.

**Site Totals:** This is the total water usage for this site.

**Grand Totals:** This is the water usage grand total for all sites included in this report.



79 %
1
Close

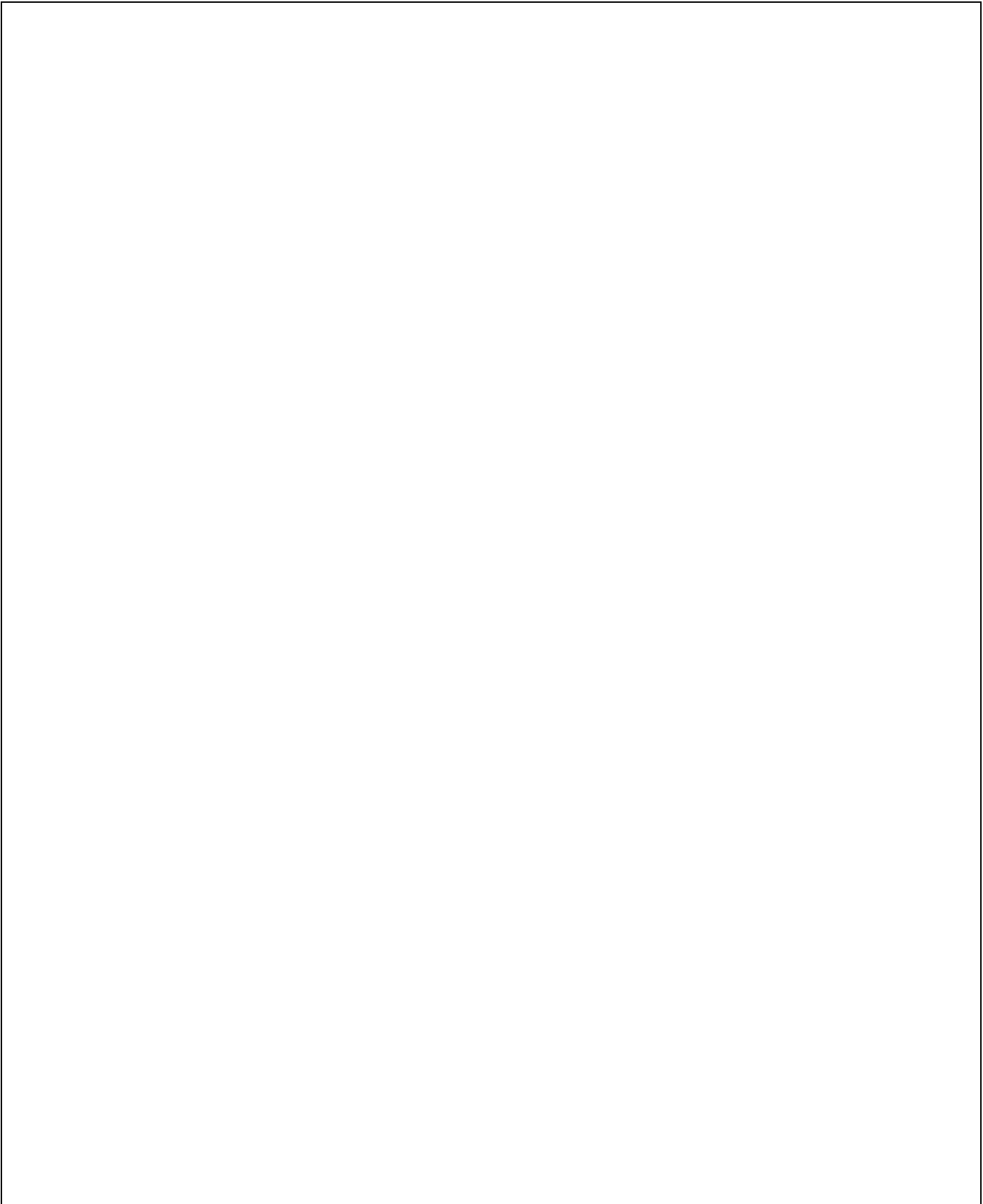
Print Current Page

**Controller Summary** July 18, 2005 1:04 PM Jan 01/2004 - Dec/31/2004

Date	Hist. ET	ET Table	Total Rain	Budget (Gallons)	Irrigation (Gallons)	Irrigation (Minutes)	Manual (Gallons)	Manual (Minutes)	Test (Gallons)	Test (Minutes)	Remote (Gallons)	Remote (Minutes)	Non Controller (Gallons)	Non Controller (Minutes)	
<b>Alabaster Cove</b>															
<b>Front Park</b>															
Jan-2004	1.75	2.50	0.00	0.00	7,342	0	0.0	209	18.0	23	1.4	0	0.0	70	47.0
Feb-2004	2.47	2.25	0.00	0.00	9,780	1,791	120.5	481	28.5	113	8.0	0	0.0	114	43.7
*Data is missing from the date range selected*															
Mar-2004	3.78	3.59	0.00	0.00	13,407	4,380	287.5	1,014	68.0	29	2.0	04	4.3	107	70.1
Apr-2004	4.72	4.55	0.00	0.00	18,741	8,602	581.3	22	1.4	159	9.4	0	0.0	360	234.5
May-2004	5.61	5.46	0.00	0.00	19,898	12,955	904.7	354	24.7	59	6.7	0	0.0	1,059	177.3
Jun-2004	6.72	4.93	0.00	0.00	22,871	12,082	958.5	0	0.0	0	0.0	0	0.0	507	274.6
Jul-2004	6.82	6.82	0.00	0.00	24,220	18,010	1,295.0	0	0.0	359	28.1	0	0.0	504	120.4
Aug-2004	6.47	6.47	0.00	0.00	22,940	16,708	1,112.8	0	0.0	120	8.4	0	0.0	710	128.8
Sep-2004	5.43	5.43	0.00	0.00	19,260	14,510	1,004.3	0	0.0	196	20.0	12	0.9	260	77.4
Oct-2004	3.70	3.70	0.00	0.00	13,407	8,025	421.0	0	0.0	19	2.0	42	3.1	659	100.7
Nov-2004	2.48	2.48	0.00	0.00	8,796	1,752	119.8	387	35.0	0	0.0	6	0.6	98	20.2
Dec-2004	1.95	1.95	0.00	0.00	6,916	1,415	91.7	60	6.0	1	0.1	0	0.0	605	110.7
<b>Totals:</b>	<b>51.90</b>	<b>40.18</b>	<b>0.00</b>	<b>0.00</b>	<b>186,602</b>	<b>97,218</b>	<b>6,789.2</b>	<b>2,575</b>	<b>181.6</b>	<b>1,090</b>	<b>94.2</b>	<b>124</b>	<b>9.0</b>	<b>5,478</b>	<b>1,511.5</b>
Site Totals:					186,602	97,218	6,789.2	2,575	181.6	1,090	94.2	124	9.0	5,478	1,511.5
<b>Grand Totals:</b>					<b>186,602</b>	<b>97,218</b>	<b>6,789.2</b>	<b>2,575</b>	<b>181.6</b>	<b>1,090</b>	<b>94.2</b>	<b>124</b>	<b>9.0</b>	<b>5,478</b>	<b>1,511.5</b>

Page 1 of 1





**making water work**

since 1986