

29.0 STATION SUMMARY

Station Summary: The Station Summary report is a detailed breakout of the Controller Summary report with the information shown by station.

1. From the toolbar at the top of the screen select **Water Reports** then scroll down to **Station Summary** and click on it (Figure 29.0.1).



Figure 29.0.1

Note: This will take you to the “Station Summary” screen (Figure 29.0.2).

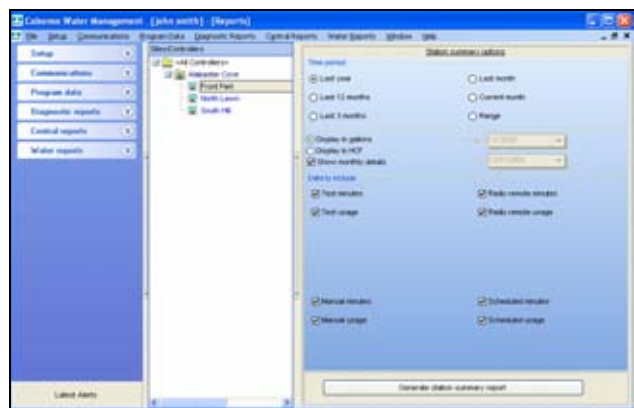


Figure 29.0.2

2. Next click on a controller from your controller list to highlight it (Figure 29.0.3).

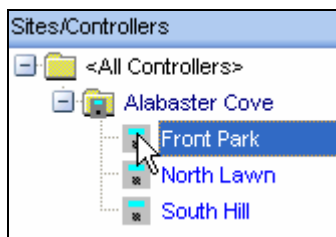


Figure 29.0.3

Time Period: This allows you to select a range of time by selecting from one of the six choices below (Figure 29.0.4).

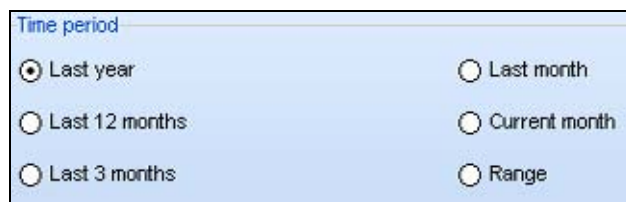


Figure 29.0.4

Last year: This will allow you to select a date range from the first day of the last calendar year to the last day of the calendar year.

Last 12 months: This will allow you to select a date range for the last 12 calendar months.

Last 3 months: This will allow you to select a date range for the last three calendar months.

Last month: This will allow you to select a date range for the last calendar month.

Current month: This will allow you to select a date range from the first day of this month until the last day of this month.

Range: This allows you to select a specific date range with a set start date and set finish date.

Note: This will open up the date range boxes directly below the **Range** button (Figure 29.0.5).

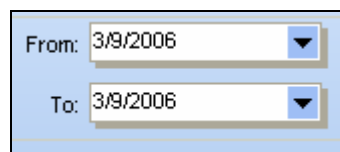


Figure 29.0.5

3. Click on the drop down arrow to select a date. This will reveal the calendar to choose a specific date (Figure 29.0.6).



Figure 29.0.6

Note: Use the **BLACK** arrows to adjust the **MONTH** and **YEAR** or click on the **Today** button to set the date for today's date.

- Next click on the box for each item from the **Data to include** list that you would like to include in your report (Figure 29.0.7).

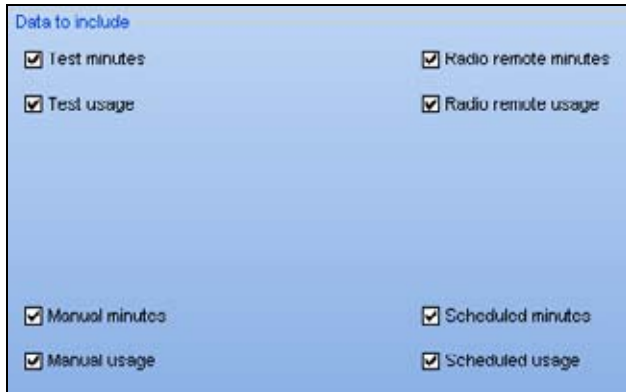


Figure 29.0.7

- In the **Display style** section click on the appropriate box for the following (Figure 29.0.8).

Display in gallons: This will display all water totals in gallons.

Display in HCF: This will display all water totals in hundreds of cubic feet.

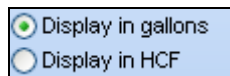


Figure 29.0.8

- Click on the **Show monthly details** button if you want your report to show calculations for each day of the month selected in the report (Figure 29.0.9).



Figure 29.0.9

- Click on the **Generate station summary report** button (Figure 29.0.10).

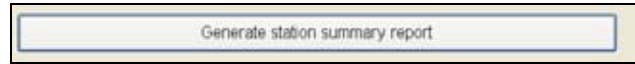


Figure 29.0.10

29.1 STATION SUMMARY REPORT

Note: This will take you to the **“Station Summary”** report screen (Figure 29.1.1).

Date	Scheduled Minutes	Manual Minutes	Total Minutes	Scheduled Gallons	Manual Gallons	Total Gallons	Radio Minutes	Radio Gallons
Apr-2004	404	0	404	0	0	0	0	0
May-2004	804	728	1532	0	22	0	0	0
Jun-2004	874	794	1668	0	0	0	0	0
Jul-2004	824	804	1628	0	0	0	0	0
Aug-2004	424	344	768	0	0	0	0	0
Sep-2004	6	73	79	0	0	0	0	0
Oct-2004	0	0	0	0	0	0	0	0
Total	6,732	37,285	44,017	0	2,000	2,000	0	0

Figure 29.1.1

SEE “HOW TO PRINT REPORTS” SECTION FOR MORE INFORMATION.

SEE LAST PAGE OF THIS SECTION FOR FULL PAGE REPORT.

 **29.2 STATION SUMMARY REPORT CONTENTS**

The following is a list of every item on the “**Station Summary**” report (Figure 29.1.1).

Date and Time: This shows the date and time that you requested the report. If you decide to print the report this gives you a way in which to file chronologically.

Report Title: This is the title of the report that you are currently viewing.

Date Range: This is the period covered by the report.

Site Name: Each site name will appear to the left of the list in regular font.

Controller Name: The controller names will be listed directly under the site that they are a part of. They will appear in alpha-numeric sequence and are in regular font.

Station: This is each individual station number.

Date: This is each individual month for each station.

Scheduled Minutes: This is the amount of time in minutes that this station was scheduled to irrigate per month.

Scheduled (HCF or Gallons): This is the amount of water in HCF or gallons that this station was scheduled to irrigate per month.

Manual Minutes: This is the amount of time in minutes that this station was used for manual irrigation.

Manual (HCF or Gallons): This is the amount of water in HCF or gallons that this station was scheduled to use during manual irrigation for each month.

Test Minutes: This is the amount of time in minutes that this station was used for test irrigation for each month.

Test (HCF or Gallons): This is the amount of water in HCF or gallons that this station was used for test irrigation for each month.

Remote Minutes: This is the amount of time in minutes used while irrigating using a Calsense Radio Remote.





Remote (HCF or Gallons): this is the amount water in HCF or gallons that this station used while irrigating using a Calsense Radio Remote.

Totals: This is the total for each column of information.

Site Totals: This is the total water usage for this site.

Grand Totals: This is the water usage grand total for all sites included in this report.



79 %

⏪ ⏴ 7 ⏵ ⏩


Close

Print Current Page

Station Summary July 18, 2005 1:50 PM

Jan/01/2004 - Dec/31/2004

Date	Scheduled Minutes	Scheduled (Gallons)	Manual Minutes	Manual (Gallons)	Test Minutes	Test (Gallons)	Remote Minutes	Remote (Gallons)
<i>Alabaster Curve</i>								
<i>Front Park</i>								
<u>Station9</u>								
Jun-2004	40.4	320	0.0	0	0.0	0	0.0	0
Jul-2004	90.4	738	0.0	0	2.8	22	0.0	0
Aug-2004	97.0	781	0.0	0	0.0	0	0.0	0
Sep-2004	82.4	664	0.0	0	0.0	0	0.0	0
Oct-2004	42.0	343	0.0	0	0.0	0	0.0	0
Nov-2004	8.8	73	0.0	0	0.0	0	0.0	0
Dec-2004	0.0	0	0.0	0	0.0	0	0.0	0
Totals:	6,788.2	07,260	181.8	2,587	04.2	1,098	0.0	126
Site Totals:	6,788.2	07,260	181.8	2,587	04.2	1,098	0.0	126
Grand Totals:	6,700.2	97,260	101.6	2,507	84.2	1,090	9.0	126



Page 7 of 7

