

**32.0 COMMUNICATIONS SERVER STATUS**

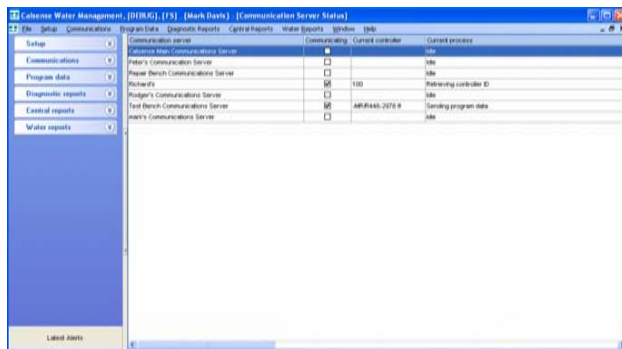
**Communications Server Status:** The Communications Server Status screen is a useful tool when dealing with a network situation where more than one communications server is available. Utilizing this screen you can visually see what the status of any one given communications server is and what it is currently doing.

1. From the toolbar at the top of the screen select **Communications** then scroll down to **Comm server status** and click on it (Figure 32.0.1).



**Figure 32.0.1**

**Note:** This will take you to the “**Communications Server Status**” screen (Figure 32.0.2).



**Figure 32.0.2**

**SEE LAST PAGE OF THIS SECTION FOR FULL PAGE REPORT.**

**32.1 COMMUNICATIONS SERVER STATUS SCREEN CONTENTS**

**Communications Server:** This is the name of each individual communications server as it has been entered into your system.

**Communicating:** This box will have a green check mark in it when the communications server is currently communicating.

**Current Controller:** This box shows the controller by name that is currently being contacted by the communications server.

**Current Process:** This box shows the action that the communications server is currently initiating.

**IP Address:** This box shows the TCP/IP (Transmission Control Protocol / Internet Protocol) address of the communications server.

**IP Port:** A TCP / IP Port# value from 0-65535. Values below 1024 are typically restricted to operating system processes.

**Modem:** A green check mark in this box indicates that the communications server is set up to communicate via a phone modem.

**AT:** A green check mark in this box indicates that the communications server is set up to use Digital Radio (AT-Bell South 1).

**MASC:** A green check mark in this box indicates that the communications server is set up to use Digital Radio (MASC-Bell South 2).

**CDPD:** A green check mark in this box indicates that the communications server is set up to use a Cellular Digital Packet Data type of communications.

**Hard Wire:** A green check mark in this box indicates that the communications server is set up to communicate via direct wire cable.

**Ethernet:** A green check mark in this box indicates that the communications server is set up to communicate via Ethernet.

**GPRS:** A green check mark in this box indicates that the communications server is set up to communicate via a General Packet Radio Service type communications.

**Fiber Optic:** A green check mark in this box indicates that the communications server is set up to communicate via a Fiber Optic Modem.

**Last Started:** This is the last time that this particular communication server was activated.

**Controller retries:** Current number of retries for this controller.

**Command retries:** Current number of retries for this command.

**Server ID:** Unique identification assigned to each communications server.

**Number Of Controllers:** Current number of controllers in a communication's query.

**Online:** Displays if this communications server is online and available to process communication requests.

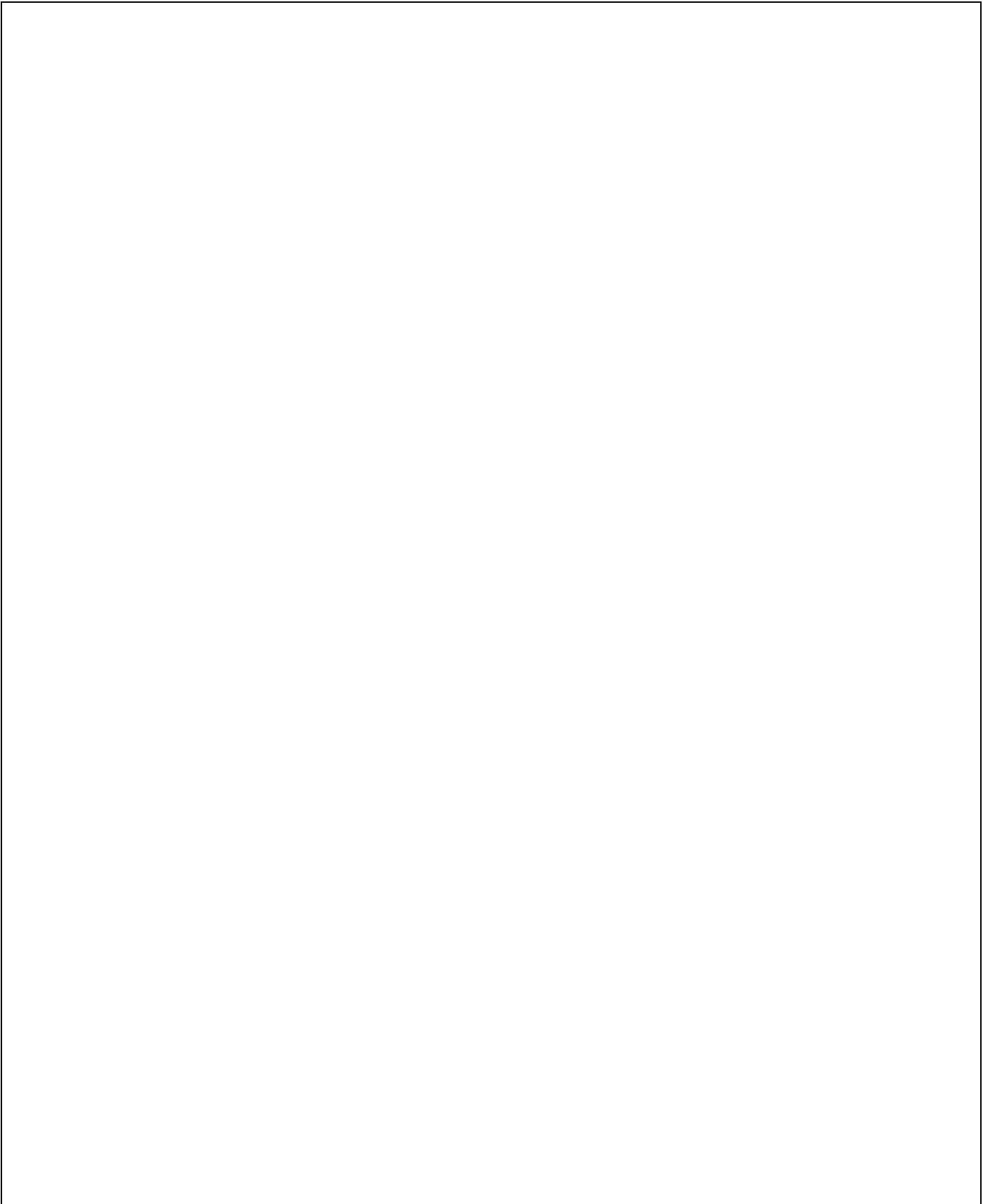
**Version:** Communication server software version.

**Host Name:** Host personal computer name communications server is running on.



Communications server	Communicating	Current controller	Current process
Mark's Communications Server	<input checked="" type="checkbox"/>	100	Retrieving controller ID
Peter's Communication Server	<input type="checkbox"/>		Idle
Richard's Communications Server	<input type="checkbox"/>		Idle
Richard's Communications Server	<input type="checkbox"/>		Idle
Paul's Communications Server	<input type="checkbox"/>		Idle
Mark's Communications Server	<input type="checkbox"/>		Idle





**making water work**

since 1986