

34.0 POC SUMMARY

P.O.C. Summary: The P.O.C. Summary report is a detailed breakout of the Irrigation Controller Points of Connection for connections two (2) and three (3). The Irrigation Controller must meet the following criteria:

- Have a (-F) option installed.
 - Points of connection must be used for non-irrigation purposes.
 - Must have a flow meter installed for each point of connection reported on.
1. From the toolbar at the top of the screen select **Water Reports** then scroll down to **POC Summary** and click on it (Figure 34.0.1).

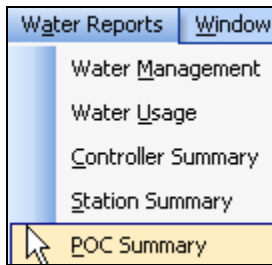


Figure 34.0.1

Note: This will take you to the “**POC Summary**” screen (Figure 34.0.2).

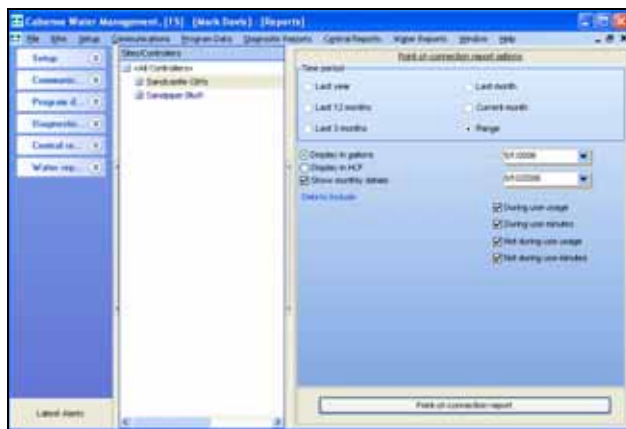


Figure 34.0.2

2. Next click on a controller from your controller list to highlight it (Figure 34.0.3).

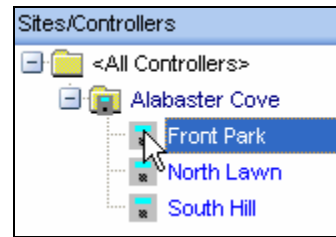


Figure 34.0.3

Time Period: This allows you to select a range of time by selecting from one of the six choices below (Figure 34.0.4).

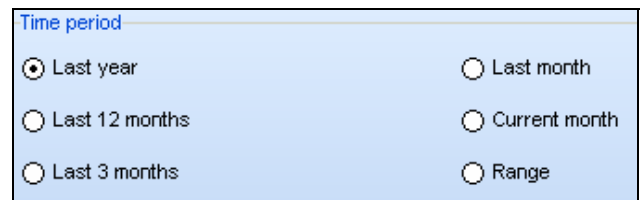


Figure 34.0.4

Last year: This will allow you to select a date range from the first day of the last calendar year to the last day of the calendar year.

Last 12 months: This will allow you to select a date range for the last 12 calendar months.

Last 3 months: This will allow you to select a date range for the last three calendar months.

Last month: This will allow you to select a date range for the last calendar month.

Current month: This will allow you to select a date range from the first day of this month until the last day of this month.

Range: This allows you to select a specific date range with a set start date and set finish date.

Note: This will open up the date range boxes directly below the **Range** button (Figure 34.0.5).

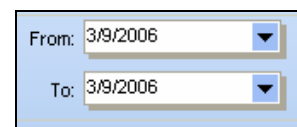


Figure 34.0.5

- Click on the drop down arrow to select a date. This will reveal the calendar to choose a specific date (Figure 34.0.6).

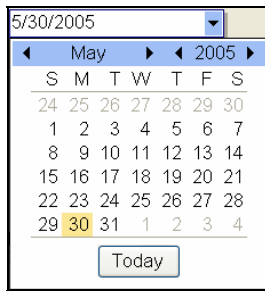


Figure 34.0.6

Note: Use the **BLACK** arrows to adjust the **MONTH** and **YEAR** or click on the **Today** button to set the date for today's date.

- Next click on the box for each item from the **Data to include** list that you would like to include in your report (Figure 34.0.7).



Figure 34.0.7

- In the **Display style** section click on the appropriate box for the following (Figure 34.0.8).

Display in gallons: This will display all water totals in gallons.

Display in HCF: This will display all water totals in hundreds of cubic feet.

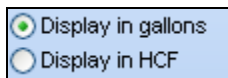


Figure 34.0.8

- Click on the **Show monthly details** button if you want your report to show calculations for each day of the month selected in the report (Figure 34.0.9).



Figure 34.0.9

- Click on the **Generate station summary report** button (Figure 34.0.10).

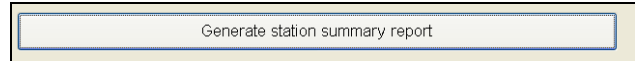


Figure 34.0.10

34.1 P.O.C SUMMARY REPORT

Note: This will take you to the **"P.O.C Summary"** report screen (Figure 34.1.1).

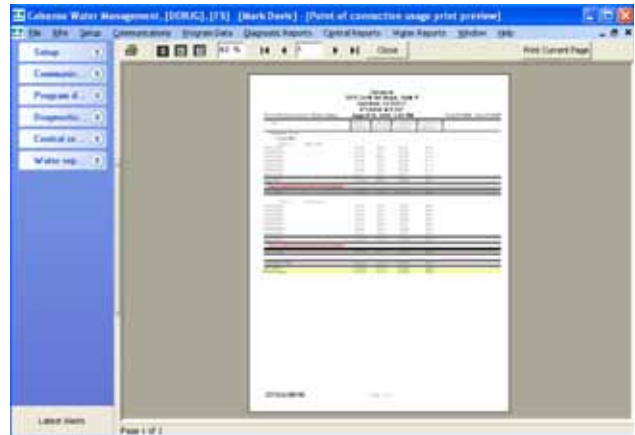


Figure 34.1.1

SEE "HOW TO PRINT REPORTS" SECTION FOR MORE INFORMATION.

SEE LAST PAGE OF THIS SECTION FOR FULL PAGE REPORT.

34.2 P.O.C SUMMARY REPORT CONTENTS

The following is a list of every item on the **"P.O.C Summary"** report (Figure 34.2.1).

Date and Time: This shows the date and time that you requested the report. If you decide to print the report this gives you a way in which to file chronologically.

Report Title: This is the title of the report that you are currently viewing.

Date Range: This is the period covered by the report.

Site Name: Each site name will appear to the left of the list in bold font.

Controller Name: The controllers assigned to this site will appear by name and will be listed directly under the site name.

Date: This is each individual date that each Point of Connection was scheduled to open during the date range requested.

During Use Gallons / HCF: This is the amount of gallons or hundreds of cubic feet of water used during the time the Point of Connection was open during that specific date.

During Use Minutes: This is the amount of time in minutes used while the Point of Connection was open during that specific date.

Not During Use Gallons / HCF: This is the amount of gallons or hundreds of cubic feet of water used during the time the Point of Connection was not scheduled to be open during that specific date.

Not During Use Minutes: This is the amount of time in minutes used while the Point of Connection was scheduled to be closed during that specific date.

Total: At the bottom of each column is a running total for each column for each month of the date range selected.

POC Totals: This entry shows a complete total for each column from the beginning entry to the final entry of the date range requested.

Controller Totals: This entry shows a combined total for each column for POC2 and POC3.

Site Totals: This entry shows a combined total for each column for each site queried for this report.

Grand Totals: This entry shows a combined total for each column for all points of connection for all sites and controllers queried for this report.



Calsense
2075 Corte del Nogal, Suite P
Carlsbad, CA 92011
572-8608 Ext. 327

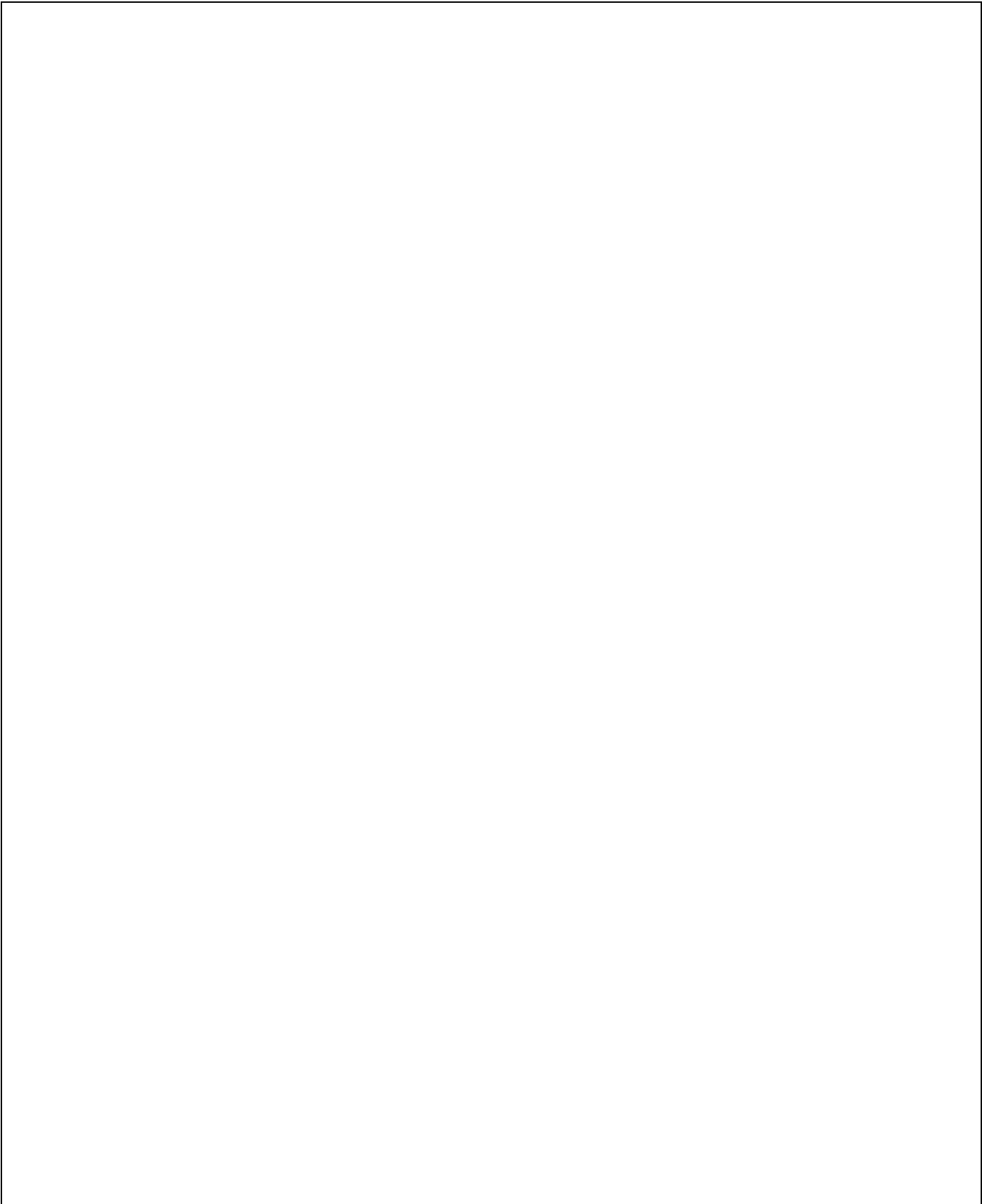
Point-Of-Connection Water Usage August 10, 2006 2:50 PM Jul/06/2006 - Aug/10/2006

Date	During Use (Gallons)	During Use (Minutes)	Not During Use (Gallons)	Not During Use (Minutes)
Alabaster Cove				
South Hill				
POC -2 Back Gate				
07/06/2006	2,063	42.7	2,033	42.2
07/07/2006	2,062	42.7	2,032	42.2
07/08/2006	2,061	42.7	2,031	42.2
07/09/2006	2,060	42.7	2,030	42.2
07/10/2006	2,059	42.7	2,029	42.2
07/11/2006	2,058	42.6	2,028	42.1
07/12/2006	2,057	42.6	2,027	42.1
07/13/2006	2,056	42.6	2,026	42.1
07/14/2006	2,055	42.6	2,025	42.1
07/15/2006	2,054	42.6	2,024	42.1
07/16/2006	2,053	42.6	2,023	42.1
07/17/2006	2,052	42.5	2,022	42.0
07/18/2006	2,051	42.5	2,021	42.0
07/19/2006	2,050	42.5	2,020	42.0
07/20/2006	2,049	42.5	2,019	42.0
07/21/2006	2,048	42.5	2,018	42.0
07/22/2006	2,047	42.5	2,017	42.0
07/23/2006	2,046	42.4	2,016	41.9
07/24/2006	2,045	42.4	2,015	41.9
07/25/2006	2,044	42.4	2,014	41.9
07/26/2006	2,043	42.4	2,013	41.9
07/27/2006	2,042	42.4	2,012	41.9
07/28/2006	2,041	42.4	2,011	41.9
07/29/2006	2,040	42.3	2,010	41.8
07/30/2006	2,039	42.3	2,009	41.8
07/31/2006	2,038	42.3	2,008	41.8
Jul-2006	53,313	1,105.2	52,533	1,092.2
08/01/2006	2,037	42.3	2,007	41.8
08/02/2006	2,036	42.3	2,006	41.8
08/03/2006	2,035	42.3	2,005	41.8
08/04/2006	2,034	42.2	2,004	41.7
08/05/2006	2,033	42.2	2,003	41.7
08/06/2006	2,032	42.2	2,002	41.7
08/07/2006	2,031	42.2	2,001	41.7
Aug-2006	14,238	295.6	14,028	292.1
<i>Data is missing from the date range selected</i>				
POC Totals:	67,551	1,400.9	66,561	1,384.4

POC -3 Front Drive				
07/06/2006	3,063	59.4	3,033	58.9
07/07/2006	3,062	59.4	3,032	58.9
07/08/2006	3,061	59.4	3,031	58.9
07/09/2006	3,060	59.3	3,030	58.8
07/10/2006	3,059	59.3	3,029	58.8
07/11/2006	3,058	59.3	3,028	58.8
07/12/2006	3,057	59.3	3,027	58.8
07/13/2006	3,056	59.3	3,026	58.8
07/14/2006	3,055	59.3	3,025	58.8
07/15/2006	3,054	59.2	3,024	58.7
07/16/2006	3,053	59.2	3,023	58.7
07/17/2006	3,052	59.2	3,022	58.7
07/18/2006	3,051	59.2	3,021	58.7



Point-Of-Connection Water Usage		August 10, 2006 2:50 PM		Jul/06/2006 - Aug/10/2006	
Date		During Use (Gallons)	During Use (Minutes)	Not During Use (Gallons)	Not During Use (Minutes)
Alabaster Cove					
South Hill					
POC -3 Front Drive					
07/19/2006		3,050	59.2	3,020	58.7
07/20/2006		3,049	59.2	3,019	58.7
07/21/2006		3,048	59.1	3,018	58.6
07/22/2006		3,047	59.1	3,017	58.6
07/23/2006		3,046	59.1	3,016	58.6
07/24/2006		3,045	59.1	3,015	58.6
07/25/2006		3,044	59.1	3,014	58.6
07/26/2006		3,043	59.1	3,013	58.6
07/27/2006		3,042	59.0	3,012	58.5
07/28/2006		3,041	59.0	3,011	58.5
07/29/2006		3,040	59.0	3,010	58.5
07/30/2006		3,039	59.0	3,009	58.5
07/31/2006		3,038	59.0	3,008	58.5
Jul-2006		79,313	1,538.5	78,533	1,525.5
<hr/>					
08/01/2006		3,037	59.0	3,007	58.5
08/02/2006		3,036	58.9	3,006	58.4
08/03/2006		3,035	58.9	3,005	58.4
08/04/2006		3,034	58.9	3,004	58.4
08/05/2006		3,033	58.9	3,003	58.4
08/06/2006		3,032	58.9	3,002	58.4
08/07/2006		3,031	58.9	3,001	58.4
Aug-2006		21,238	412.3	21,028	408.8
<hr/>					
Data is missing from the date range selected					
<hr/>					
POC Totals:		100,551	1,950.9	99,561	1,934.4
<hr/>					
Controller Totals:		168,102	3,351.7	166,122	3,318.7
<hr/>					
Site Totals:		168,102	3,351.7	166,122	3,318.7
<hr/>					
Grand Totals:		168,102	3,351.7	166,122	3,318.7



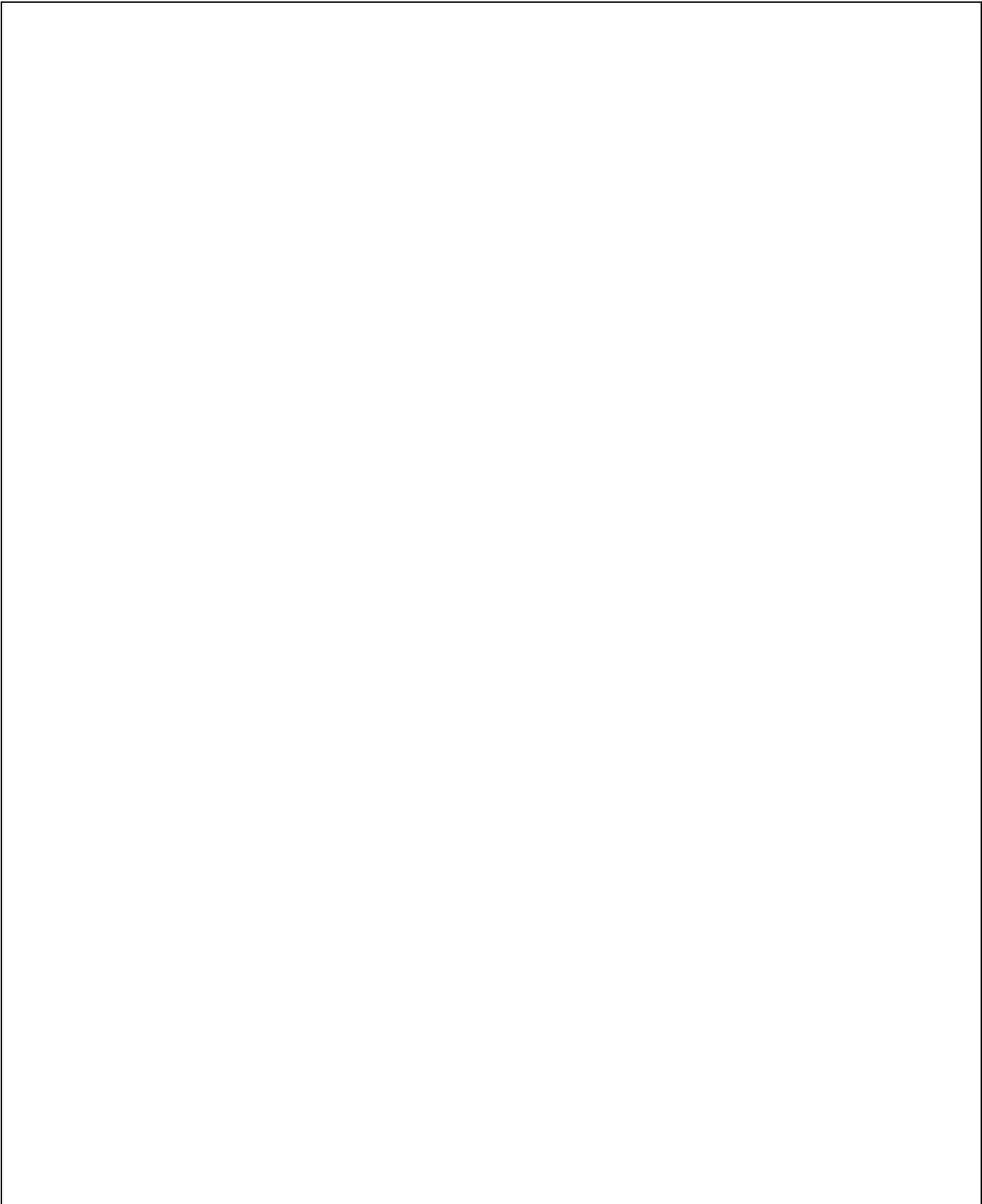
CHANGE 1

20 September 2006



making water work

since 1986



CHANGE 1

20 September 2006



making water work

since 1986