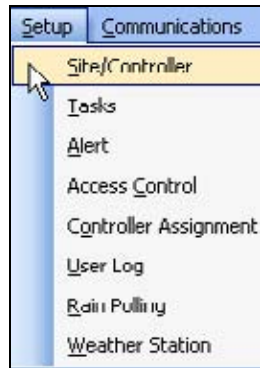


**4.0 SITE / CONTROLLER SETUP**

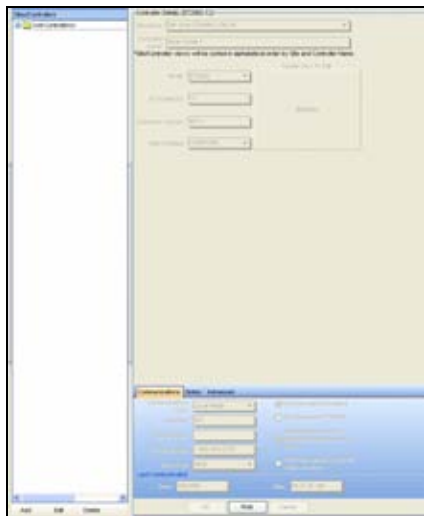
The Site / Controller Setup area is used for entering the required communications information for the controllers that will be communicated with from the central.

1. In the toolbar at the top of the screen select **Setup**. Scroll down the list to **Site/Controller** setup and click on it (Figure 4.0.1).



**Figure 4.0.1**

**Note:** This will take you to the “**Site/Controller Setup**” window (Figure 4.0.2).



**Figure 4.0.2**

**Sites/Controllers:** The site/controllers column lists all the controllers entered into Command Center.

**Controller Details:** Controller details are where all the information for communicating to a controller is entered. Once a controller has been contacted by the central, the controllers’ part number will appear after the words Controller Details. Example: Controller Details (ET2000-24-R-L-G-RB-FL-RR)

**Add:** Add is used to add a new controller to the site/controller list.

- Selecting **ADD** will activate the “**Controller Detail**” screen.

**Site Name:** Site names are used to group a number of controllers together.

- Type a name in the site name box or select the down arrow and choose a name that has already been entered. (Example: Memorial Park)

**Controller Name:** Controller names are used to identify individual controllers in a site. (Example: Snack Bar)

**Model:** This box shows the model type of the controller. This section is grayed out and will change automatically when the controller is contacted for the first time.

**# of stations:** This is the number of stations the controller is equipped with. This section is grayed out and will change automatically when the controller is contacted for the first time.

**Software version:** This is the current ROM version of the controller. This section is grayed out and will change automatically when the controller is contacted for the first time,

**Date installed:** Use this box to fill in the date that the controller was originally installed.

**(Picture):** A picture of the site or controller location can be uploaded and viewed.

**Add a picture:**

- Double click on the picture box.
- Click on the **Load** button.
- From the stored file location. Double click on the **picture** to load.

**Remove a picture:**

- Double click on the **picture** box.
- Click the **Clear** button.
- Click the **OK** button.

### 4.1 ADDING NEW SITES / CONTROLLERS

1. Click on the **Add** button at the bottom of the “**Site / Controller listing**” window (Figure 4.1.1).



Figure 4.1.1

**Note:** This will enable the controller details information area to the right of the screen.

**Note:** Some areas may be grayed out and do not require any changes.

2. Click on the “**Site Name**” box to enter a new site name (Figure 4.1.2).

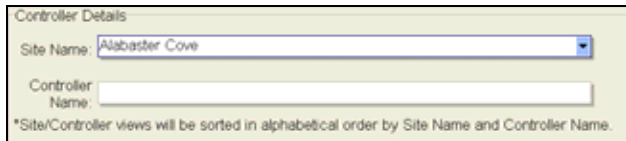


Figure 4.1.2

**Note:** By using the pull down arrow to the right of this box you can view and select site names already entered in to your list.

3. Type in a name that you want to give the entire group of controllers or site.
4. Next click on the box marked “**Controller Name:**” (Figure 4.1.3).

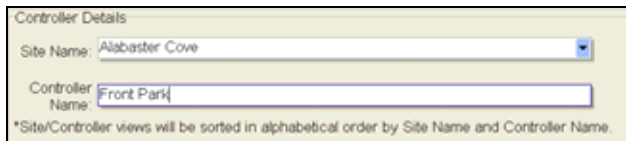


Figure 4.1.3

5. Enter a name for the controller so that it can be identified from a list.
6. Next fill out the **Date installed** box. This is to record the date the controller was installed on site (Figure 4.1.4).

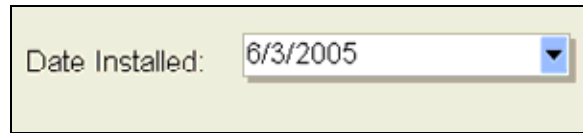


Figure 4.1.4

### 4.2 CONTROLLER COMMUNICATIONS SETUP

#### COMMUNICATIONS TAB

1. In the “**Communications Type**” box use the pull down arrow to select one of the ten different types of communications available (Figure 4.2.1)

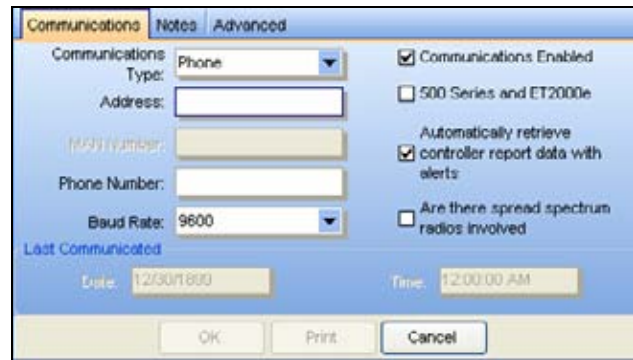


Figure 4.2.1

#### Communications Choices:

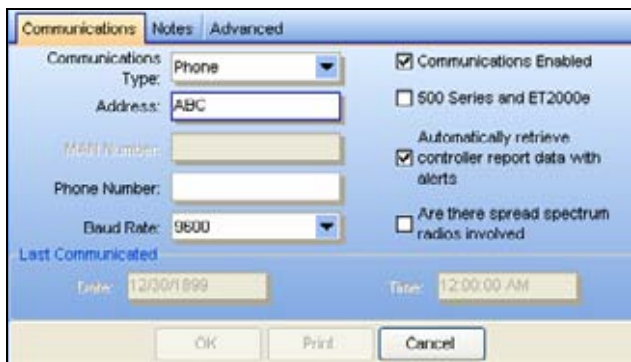
- **Phone:** (-M,-R,-MR) Used for phone or hard wire communications.
- **Local Radio:** (-ML,-LR,-MLR) Used for Local Radio.
- **Digital Radio (AT):** (-MD,-DR,-MDR) Used for digital radio using AT protocol.

- **Digital (MASC):** (-MD,-DR, -MDR) Used for digital radio using MASC protocol.
- **MDS:** Microwave Data System.
- **CDPD:** Cellular Digital Packet Data.
- **Ethernet:** (-ME,-EN,-MEN) Ethernet Network.
- **Spread Spectrum:** (-SR,-MSR,-MS) Spread Spectrum Radio.
- **GPRS:** (-MG,-GR,-MGR) General Packet Radio Service.
- **Fiber Optic Modem:** Fiber Optic Communications.

Contact Calsense at 1-(800)-572-8608 if you are unable to determine the controller's communication type.

Note: Next you will have to enter a communications address in the "Address" block.

2. Click on the "**Address:**" box and enter a three letter / number or symbol combination (Figure 4.2.2).



**Figure 4.2.2**

**Address:** The address is used to identify a particular controller's communication address. Controllers using communications options -LR, -SR, -ME, -MG, -MDR, -MLR, -MSR, -FOM, -MR or -M make it necessary to set a different communication address for each controller that is physically hard wired together sharing a single phone number, MAN number or radio.

It is not necessary to change the address if the communications option for the controller is a -DR, -EN, -GR, -R, or a stand alone controller using a

Calsense direct wire cable communicating through the front serial port of the controller.

Note: The controller's communications address shipped from the factory is !!!!. The controller's address can only be changed at the controller. The address listed here, in the central software, **must** match the address in the controller. If the addresses do not match the central **will not** communicate with the controller.

Note: ET2000 (500 series) controllers are shipped from the factory with a communications address of !!A.

**TCP/IP Address / ID / IP / MAN Number or Phone Number:** Depending on which communication type has been selected. One of the following will appear.

- TCP/IP Address: (CDPD) Cellular Digital Packet Data.
  - ID Number: (GPRS) General Packet Radio Service.
  - IP: Ethernet.
  - Man Number: (AT & MASC) Digital Radio.
  - Phone Number:
    - Phone
    - MDS
    - Local Radio or Spread Spectrum
    - Fiber Optic Modem
2. Select the TCP/IP, ID, and IP, MAN or Phone number box and enter the appropriate number.

Note: If hard wire communications is being used, no number is entered.

3. Check the appropriate boxes that apply to this controller and the environment that it is operating within.

**Communications Enabled:** Checking the box will enable "**task**" communications. This will generate an alert line "Communications Disabled for this controller, Enable in Controller Setup". This will also generate an alert line in the Communication Log, "Communications Disabled for this controller". Disabling the communications has no effect using any Speed Communications.

- Check the box to enable communications.
- Uncheck the box to disable communications.

**500 Series:** This box must be checked when the controller has 500 series firmware.

- Check this box if the controller has -FL firmware.

**Note:** To verify if a controller has 500 series firmware. At the controller, Press Main Menu / Setup / Communications. The ROM version will appear in the black strip upper right hand side of the screen.

**Automatically retrieve controller report data with alerts:** Checking this box will automatically retrieve report data every time the central retrieves alert data from a controller. This allows the user to accumulate data used to create water reports.

**Note:** Users which have a communication option which have a monthly fee should consider using a scheduled task in gathering report data where cost is a concern.

- Check the box to retrieve report data automatically.
- Uncheck box to disable report data retrieval automatically.

**Are there Spread Spectrum radios involved:** If there is an Spread Spectrum radio involved in a chain of controllers, each controller in the chain must have this box checked.

**Last Communicated:** Last Communicated displays the Date and Time of the last communication to the controller (Figure 4.2.3).



Figure 4.2.3

## NOTES TAB

1. By clicking on the “**Notes**” Tab you will open up an area where you can enter additional information about the controller (Figure 4.2.4).

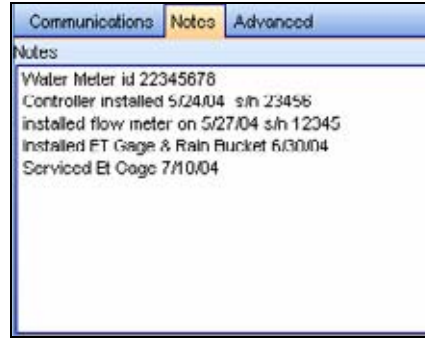


Figure 4.2.4

## ADVANCED TAB

1. BY clicking on the “**Advanced**” tab you can change the following information:

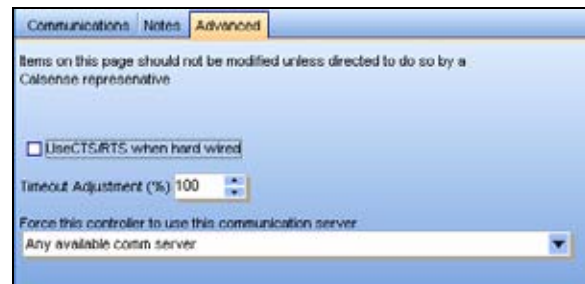


Figure 4.2.5

- Use CTS (Clear to send) / RTS (Request to send) when hardwired.
- Time out adjustment percentage.
- Force this controller to use this communications server (Figure 4.2.5).

### **CAUTION:**

**Items on the Advance tab should not be modified unless directed to do so by a Calsense representative.**

**Note:** If you choose not to save any of the information for this controller click on the **CANCEL** button at the bottom of the screen.

2. Select the **OK** button at the bottom of the screen to save your controller information. The “**Information**” screen will appear stating “If you are using tasks remember to add this controller to the following types of tasks:”

- Weather Sharing
- Alerts gathering
- Reports gathering

See (Figure 4.2.6).

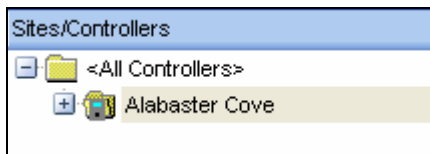


**Figure 4.2.6**

3. Click on the **OK** button to exit this window.

### **4.3 EDITING A CONTROLLER**

1. From the "Sites/Controller" list select the Site you want to edit (Figure 4.3.1)



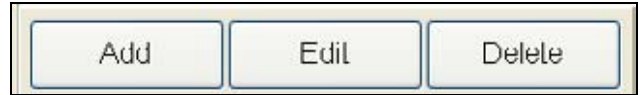
**Figure 4.3.1**

2. Click on the "+" sign to the left of the site name to reveal the controllers list assigned to this site (Figure 4.3.2).



**Figure 4.3.2**

3. Highlight the controller from the list that you want to edit.
4. Click on the **Edit** button at the bottom of this window (Figure 4.3.3).



**Figure 4.3.3**

**Note:** Clicking this button will allow you to edit the existing data for this specific controller. Use the directions in Section 4.0 of this manual to go step by step through the effected fields.

5. Once you have edited the information click on the **OK** button to save any changes that were made (Figure 4.3.4).



**Figure 4.3.4**

**Note:** If you do not want to save the edited data click on the **Cancel** button. This will not alter any information that you currently have in the database.

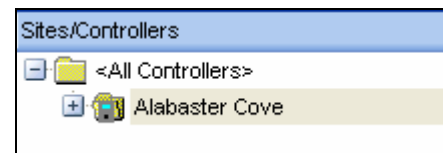
### **4.4 DELETING A SITE / CONTROLLER**

#### **DELETING A SITE**

**CAUTION:**

**When deleting a Site, all information pertaining to the controllers within the site will also be deleted.**

1. To delete a site use the "Site / Controller" window to find the Site.
2. Highlight the site name (Figure 4.4.1).



**Figure 4.4.1**



3. Click on the **Delete** button.

**Note:** This will bring up the “**Confirm**” screen (Figure 4.4.2).



Figure 4.4.2

4. Click the **Yes** button if you want to delete this site.

**Note:** If you do not want to delete this site click the **No** button.

**DELETING A CONTROLLER**

**CAUTION:**

**When deleting a Controller, all information pertaining to the controller will also be deleted.**

1. To delete a controller use the “**Site / Controller**” window to find the Site that the controller is assigned to (Figure 4.4.3).

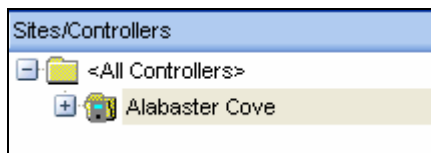


Figure 4.4.3

2. Click on the “+” sign to the left of the site name to reveal the controller list attached to this site (Figure 4.4.4).

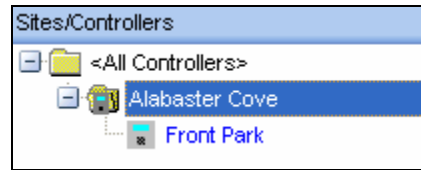


Figure 4.4.4

3. Highlight the controller from the list that you want to delete (Figure 4.4.5).

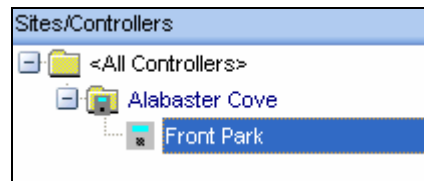


Figure 4.4.5

4. Click on the **Delete** button at the bottom of this window (Figure 4.4.6).



Figure 4.4.6

**Note:** Clicking this button will bring up the “**Confirm**” screen (Figure 4.4.7).

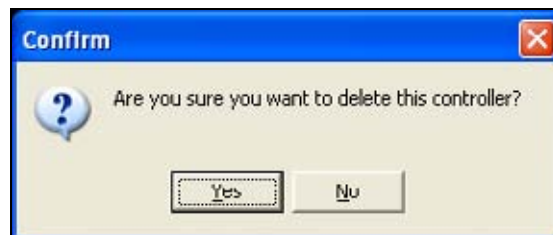


Figure 4.4.7

5. Click the **Yes** button to delete the controller selected.

**Note:** If you do not want to delete this controller or site from your list click the **No** button. This will not change any of your current settings.



**4.5 PRINTING CONTROLLER INFORMATION**

To **Print** controller information use the “**Site / Controller**” window to find the Site.

1. Select the site in the “**Site / Controller**” window (Figure 4.5.1).



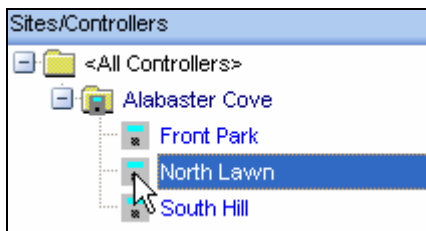
**Figure 4.5.1**

2. Click on the “+” sign to the left of the site name to reveal the controller list attached to this site (Figure 4.5.2).



**Figure 4.5.2**

3. Highlight the controller from the list that you want to print (Figure 4.5.3).



**Figure 4.5.3**

4. Then click on the **Print** button at the bottom of the “**Controller Details**” screen (Figure 4.5.4).



**Figure 4.5.4**

**Note:** This will bring you to the “Print” screen (Figure 4.27).

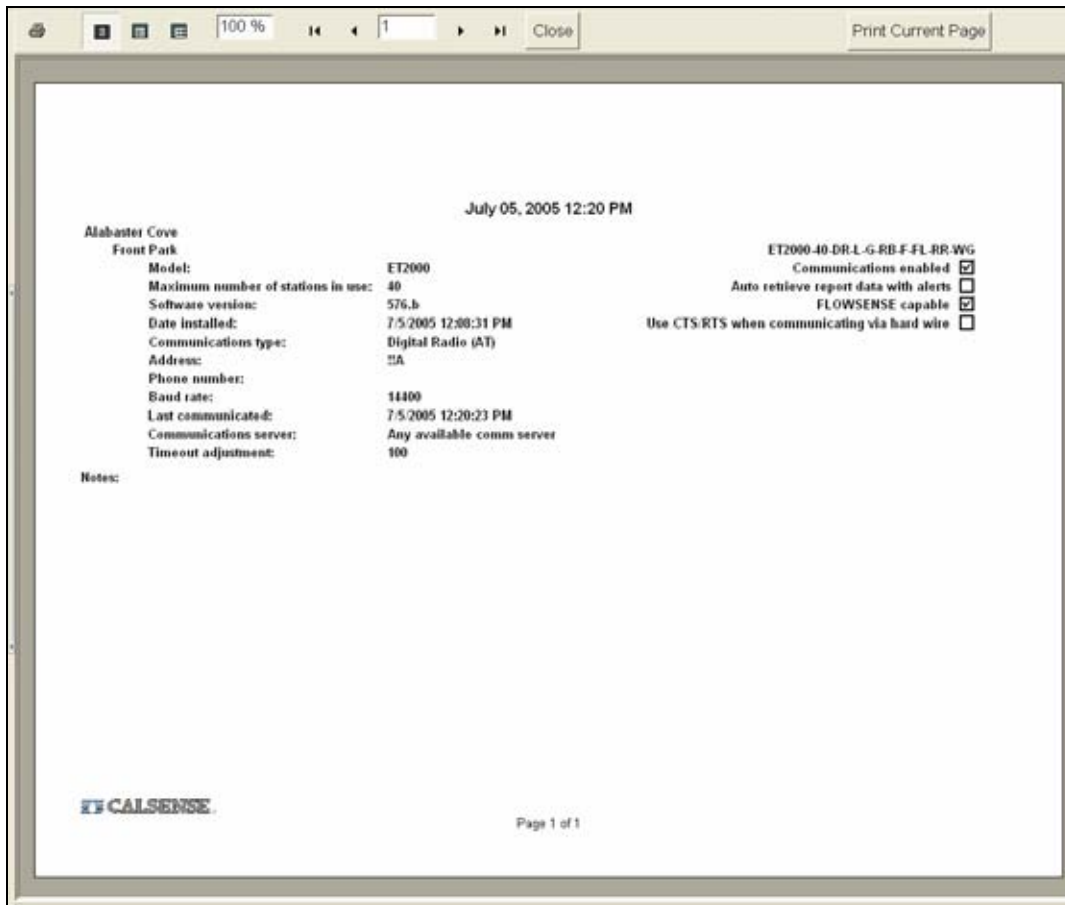


Figure 4.27

**SEE “HOW TO PRINT REPORTS” SECTION FOR MORE INFORMATION.**





