

7.0 DIRECT ACCESS

Direct Access: Direct access is a direct link to the controller in the field which provides a real time view of the controllers display screen and current activity. Direct access also allows the user to test and manually water stations, turn On/Off the controller and master valve override.

Note: Direct access does not support programming changes to the controller and is limited to only the highlighted keys on the keypad. Any keys that are grayed out on the keypad are not accessible.

1. From the toolbar at the top of the screen select **Communications** then scroll down to **Speed Communications** and click on it (Figure 7.0.1)

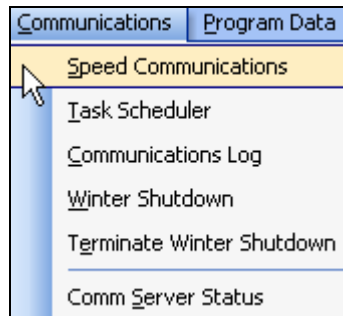


Figure 7.0.1

2. Select the Site / Controller that you want to perform Direct Access on from the “**Sites / Controllers**” window. Make sure that it is highlighted (Figure 7.0.2).

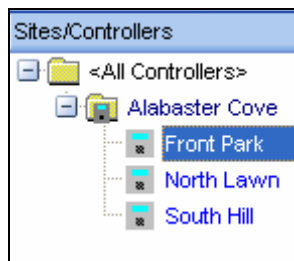


Figure 7.0.2

3. From the List of icons to the right of the “**Speed Communications**” screen select the **Direct Access** Icon (Figure 7.0.3).

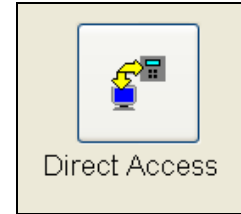


Figure 7.0.3

Note: A communications screen will appear letting you know that you are communicating with the controller of choice (Figure 7.0.4).

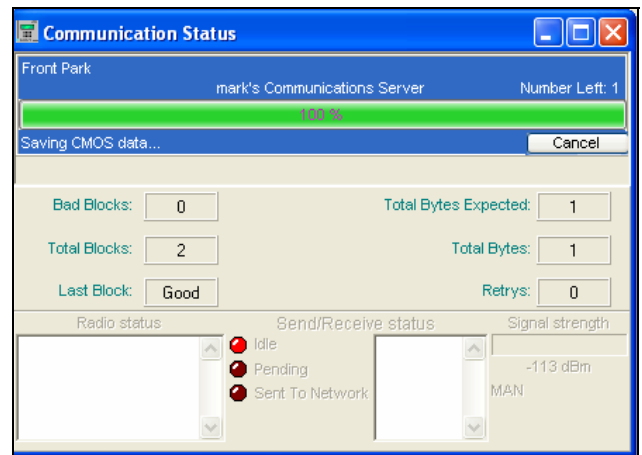


Figure 7.0.4

Note: After the communications has taken place the “**Communications Completed**” screen will appear (Figure 7.0.5).

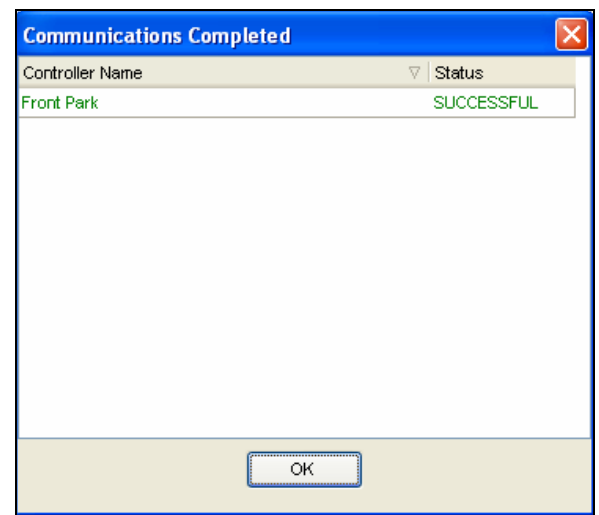


Figure 7.0.5

4. Click on the **OK** button.

For Direct Access:

- ET1 SEE SECTION 7.1**
- ET 2000 (400 SERIES) SEE SECTION 7.2**
- ET 2000 (500 SERIES) SEE SECTION 7.3**
- ET 2000e SEE SECTION 7.4**

7.1 DIRECT ACCESS ET1

Note: The ET1 Direct Access screen will appear (Figure 7.1.0).



Figure 7.1.0

Station Up/Down: Advances to the next or back to the previous station.

Master Valve: Will open, close, or test the master valve for the time set at the controller.

1. Click the **DOWN** arrow to select what state you would like to place the master valve into (Figure 7.1.1).



Figure 7.1.1

Note: To end master valve override select the **Clear** key or allow the time to expire.

Master Valve Test ET1 Controllers: This feature tests the opening and closing of the master valve

while a station is operating and requires that the controller be connected to a flow meter with the flow feature turned on.

2. Using the **Manual** key, Select Manual Watering Type / Station. Click **OK** (Figure 7.1.2)

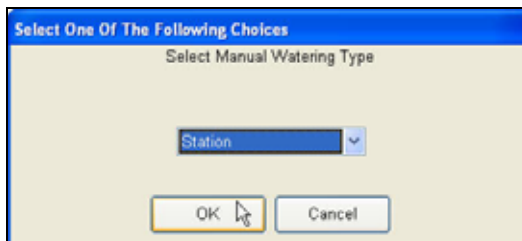


Figure 7.1.2

3. Select a Station To Water. Click **OK** (Figure 7.1.3).

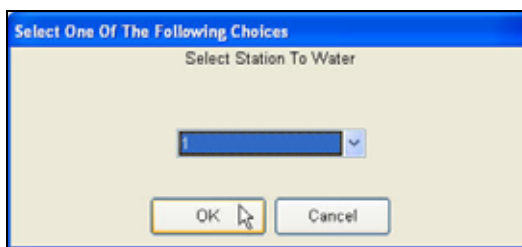


Figure 7.1.3

Note: Allow 30 seconds of time to pass to allow the stations flow to stabilize.

4. With the station running, select the **Master Valve** key. Click on the **DOWN** arrow and select Test. Click **OK** (Figure 7.1.4).

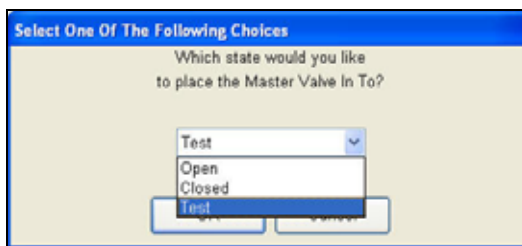


Figure 7.1.4

Note: If the master valve is operating properly, the flow rate on the station that was turned on will drop to 0 GPM's.

5. Select the **Clear** key to turn off the current station running.
6. Select the **Test** key and turn on the station used for the test to verify that water is flowing through the valve again. Select the **Clear** key to end the Test.

Irrigation On / Off: This will turn the controller to the ON or OFF mode.

Test: Testing irrigation with Direct Access should be used to check actual flow against the learned flow rate. Selection is done by Station only and is performed as a NOW command.

7. Select a single station only to test (Figure 7.1.5).

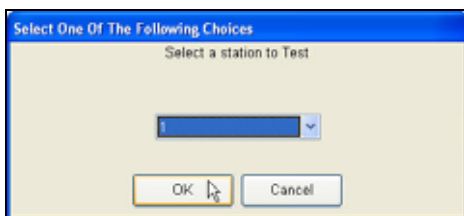


Figure 7.1.5

Note: The station test time is set for two minutes by default in the controller but can be adjusted at the controller.

Reset Flow: To reset a stations current flow rate to a new flow value.

Note: Controller must be connected to flow meter and the flow feature enabled.

8. Select **Reset Flow**. Enter a new flow value. Click **OK** (Figure 7.1.6).

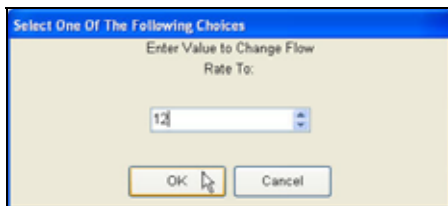


Figure 7.1.6

Manual: Manual watering with direct access can be done by Station, Program or All Station and is performed as a NOW command.

9. Select watering type. Click **OK** (Figure 7.1.7).

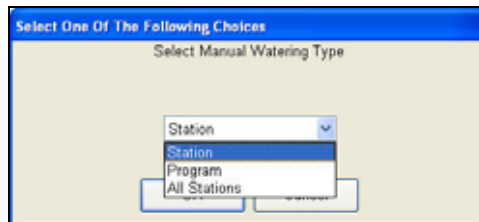


Figure 7.1.7

Note: Manual watering time for each station will be the total minute time assigned to that particular station at the controller.

Station #: Station # allows the user to advance to a particular station without scrolling through station up/down.

Display Update: Update of the current controller screen.

Clear: Clear is used to stop something that is currently running with direct access.

Quit: Exit direct access.

7.2 DIRECT ACCESS ET2000 (400 SERIES).

Note: The ET2000 Direct Access screen will appear (Figure 7.2.1).



Figure 7.2.1

Stop: Stop will end anything that is currently running.

Quit: Exit direct access.

Manual: Manual watering with direct access can be done by Station, Program or All Stations and is performed as a NOW command.

1. Click on the **DOWN** arrow to view the different screen selections. Click **OK** (Figure 7.2.2).

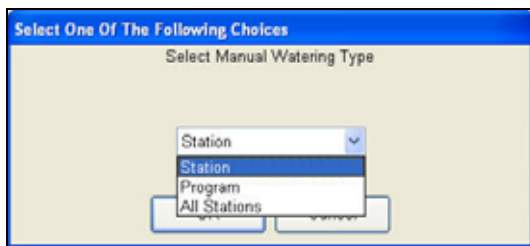


Figure 7.2.2

Note: Manual watering time for each station will be the total minute time assigned to that particular station.

On / Off: This will turn the controller to the ON or OFF mode.

Display Update: Update of the current controller screen.

Test: Testing irrigation with direct access should be used to check actual flow against the learned flow rate or the current draw on a particular station. Test can be performed by Station, Program or All Stations and is performed as NOW command.

2. Click on the **DOWN** arrow to view the different screen selections. Click **OK** (Figure 7.2.3).

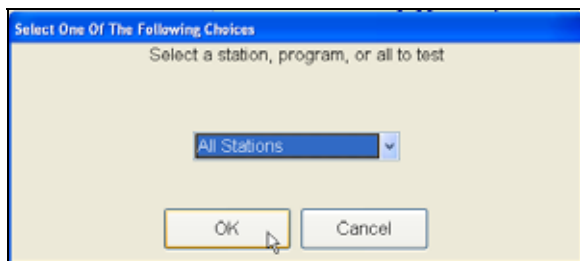


Figure 7.2.3

Note: The station test time is set for two minutes default in the controller but can be adjusted at the controller.

Station #: Station # allows the user to advance to a particular station.

Master Valve: Will open or close the master valve for the time set at the controller.

3. Click on the **DOWN** arrow to view the different screen selections (Figure 7.2.4).



Figure 7.2.4

Master Valve Test: This feature tests the opening and closing of the master valve while a station is operating and requires that the controller be connected to a flow meter with the flow feature turned on.

4. Using the Manual key Select Manual Watering Type / Station. Click **OK** (Figure 7.2.5).



Figure 7.2.5

5. Select a Station number to water. Click **OK** (Figure 7.2.6).

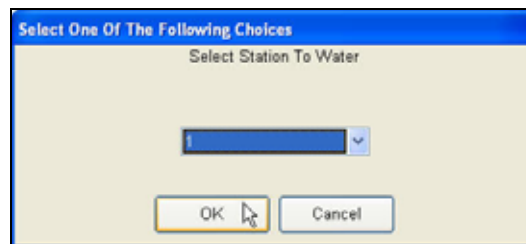


Figure 7.2.6

Note: Allow 30 seconds of time to pass to allow the stations flow to stabilize.

- With the station running, select the **Master Valve** key. Click on the **DOWN** arrow and select Test. Click **OK** (Figure 7.2.7).



Figure 7.2.7

Note: If the master valve is operating properly the flow rate on the station will drop to 0 GPM's.

- Select the **STOP** key to turn off the current station running.
- Select the **Test** key and turn on the station used for the test to verify that water is flowing through the valve again. Select the **STOP** key to end the Test.

Reset Flow: Resets a stations current flow rate to a new flow value.

- Click on the **DOWN** arrow to select a station. Click **OK** (Figure 7.2.8).

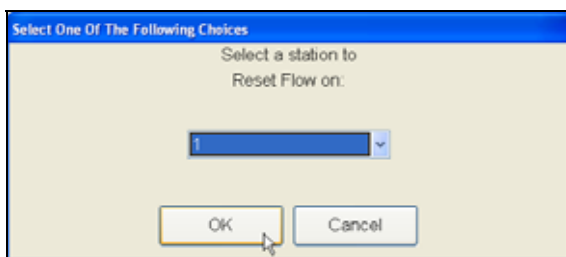


Figure 7.2.8

- Enter a new flow rate. Click **OK** (Figure 7.2.9).

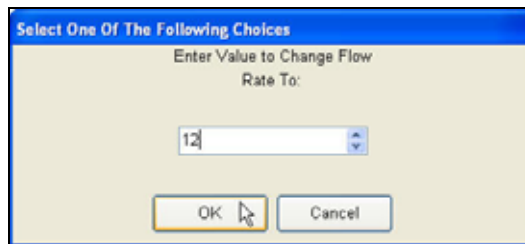


Figure 7.2.9

Go To Screen: The “**Go To Screen**” Allows the user to view the **Controller Status** and **Irrigation Activity** screen.

- Click on the **DOWN** arrow to view the different screen selections. Click **OK** (Figure 7.2.10).

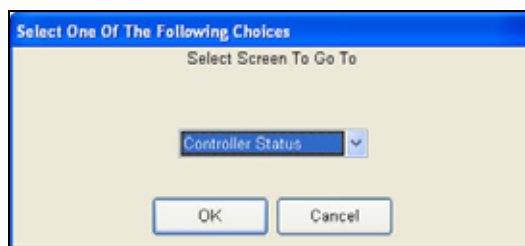


Figure 7.2.10

Note: Click on the **QUIT** button when finished with Direct Access.

7.3 DIRECT ACCESS ET2000 (500 SERIES).

Note: The ET2000 Direct Access screen will appear (Figure 7.3.1).

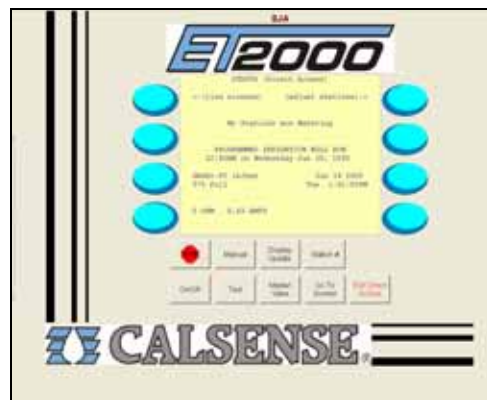


Figure 7.3.1

Stop: Stop will end something that is currently running with direct access.

On / Off: This will turn the controller to the ON or OFF mode.

Manual: Manual watering with direct access can be done by Station, Program or All Stations and is performed as a NOW command.

1. Select a watering type. Click **OK** (Figure 7.3.2).

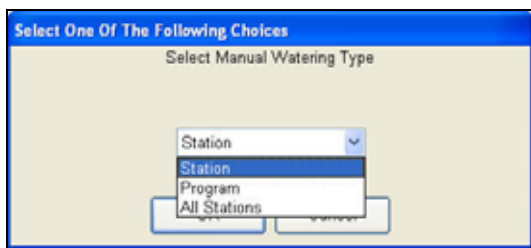


Figure 7.3.2

Note: Manual watering time for each station will be the total minute time assigned to that particular station at the controller.

Test: Testing irrigation with direct access should be used to check actual flow against the learned flow rate or the current draw on a particular station. Selection is done by Station only and is performed as NOW command.

2. Select a single station only to test (Figure 7.3.3).

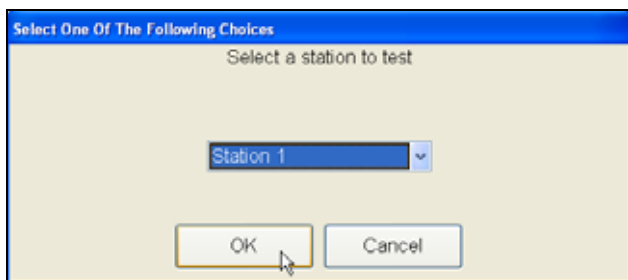


Figure 7.3.3

Note: The station test time is set for two minutes by default in the controller but can be adjusted at the controller.

Display Update: Update of the current controller screen.

Station #: The station # allows the user to advance to a particular station.

Master Valve: Is used to open a normally closed master valve set by the user (Figure 7.3.4)

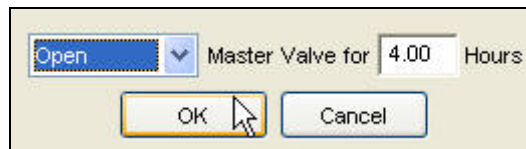


Figure 7.3.4

Go To Screen: Allows the Administrator and the Standard user to view the following screens:

- Controller Status
- Irrigation Details
- Irrigation Activity
- Real Time Flow

3. Click on the **DOWN** arrow to view the different screen selections (Figure 7.3.5).

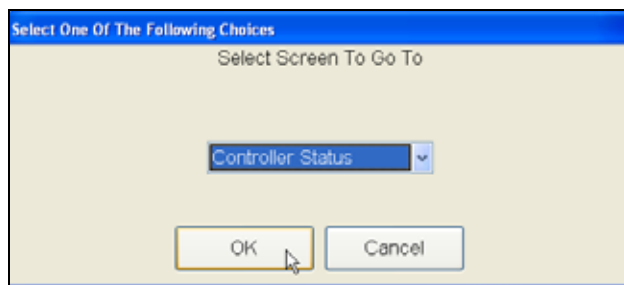


Figure 7.3.5

Note: Be sure to click on the **Exit Direct Access** button when finished with Direct Access.

7.4 DIRECT ACCESS ET2000e.

Note: The ET2000e Direct Access screen will appear (Figure 7.4.1).



Figure 7.4.1

Stop: Stop will end something that is currently running with direct access.

On / Off: This will turn the controller to the ON or OFF mode.

Manual: Manual watering with direct access can be done by Station, Program or All Stations and is performed as a NOW command.

4. Select a watering type. Click **OK** (Figure 7.4.2).

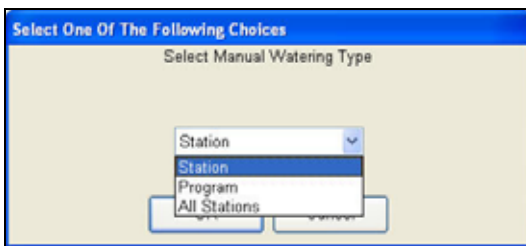


Figure 7.4.2

Note: Manual watering time for each station will be the total minute time assigned to that particular station at the controller.

Test: Testing irrigation with direct access should be used to check actual flow against the learned flow rate or the current draw on a particular station. Selection is done by Station only and is performed as NOW command.

5. Select a single station only to test (Figure 7.4.3).

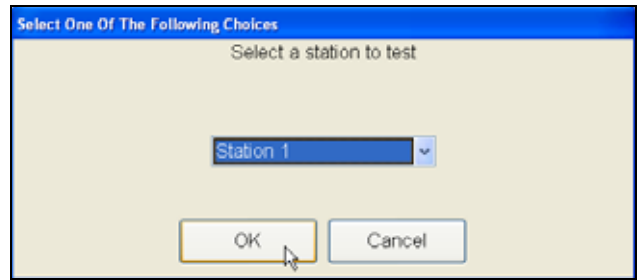


Figure 7.4.3

Note: The station test time is set for two minutes by default in the controller but can be adjusted at the controller.

Display Update: Update of the current controller screen.

Station #: The station # allows the user to advance to a particular station.

Master Valve: Is used to open a normally closed master valve set by the user (Figure 7.4.4)

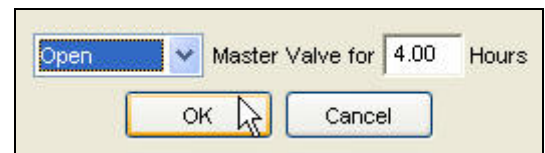


Figure 7.4.4

Go To Screen: Allows the Administrator and the Standard user to view the following screens:

- **Controller Status**
- **Irrigation Details**
- **Irrigation Activity**
- **Real Time Flow**

6. Click on the **DOWN** arrow to view the different screen selections (Figure 7.4.5).

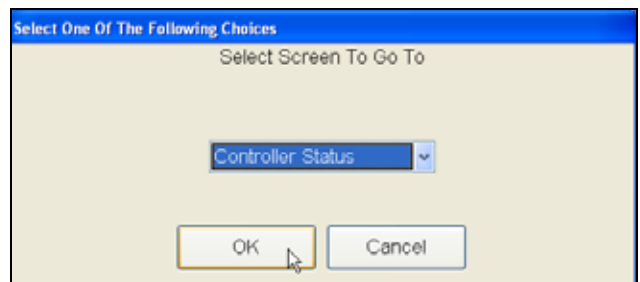


Figure 7.4.5

Note: Be sure to click on the [Exit Direct Access](#) button when finished with Direct Access.



