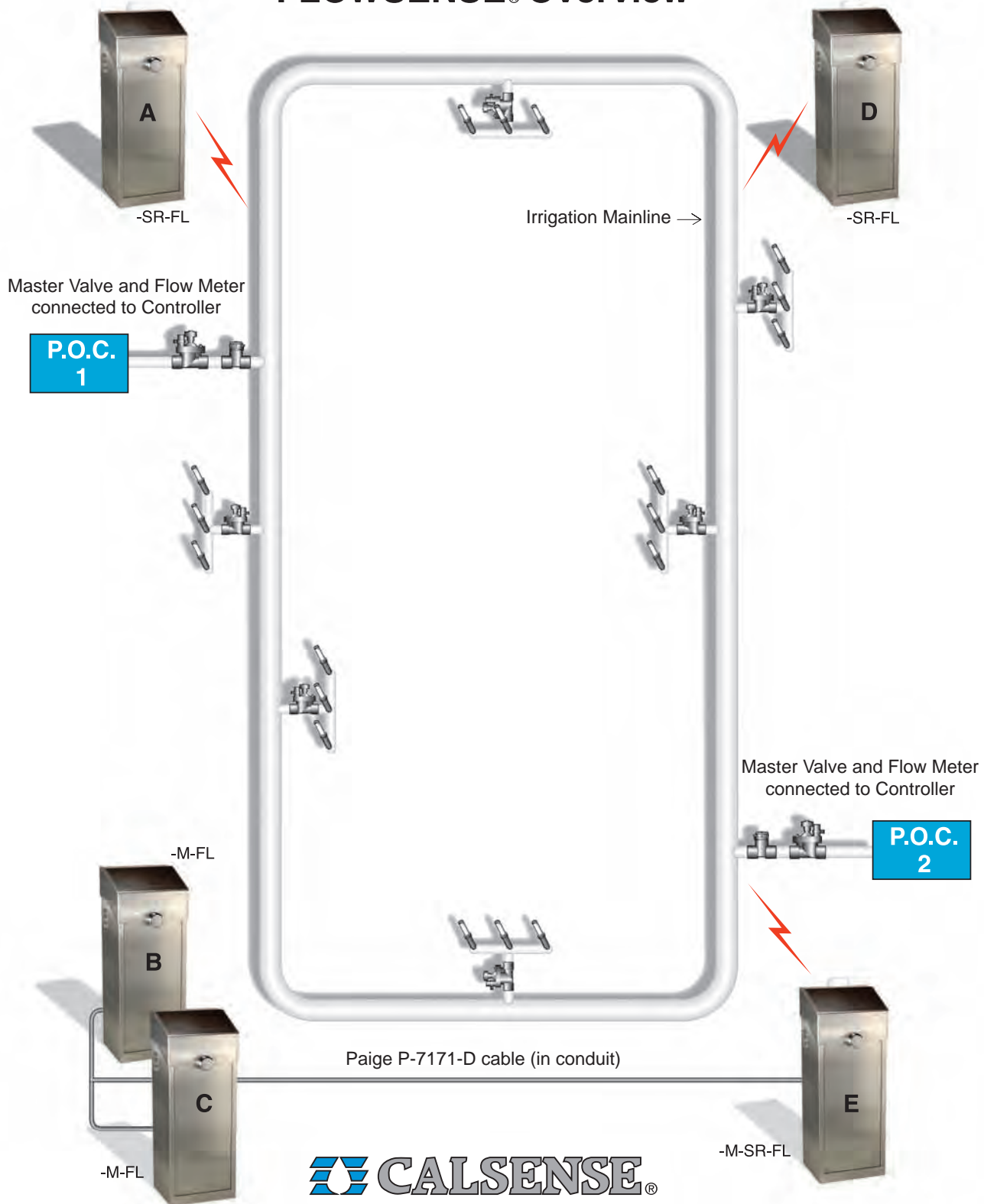


# FLOWSENSE® IT WORKS!

CALSENSE® has developed the FLOWSENSE® option so the user gets what they want. A simple yet powerful system that provides full Water Management features all at the controller with no central computer required no matter what the irrigation layout is.

## FLOWSENSE® Overview

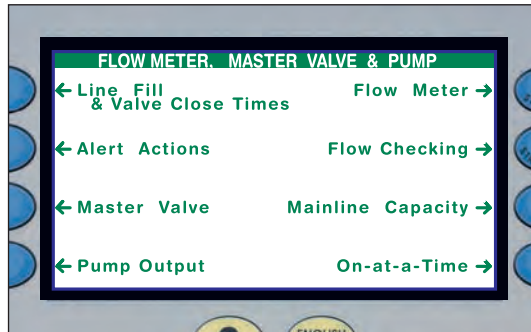


“WATER MANAGEMENT SYSTEMS THAT WORK!”

2075 Corte del Nopal Suite P Carlsbad, CA 92011  
Phone: 1-800-572-8608 Fax: 760-438-2619 E-mail sales@calsense.com  
Web Site www.calsense.com

# FLOWSENSE® - Simple, Convenient and Easy

The **CALSENSE® FLOWSENSE®** option allows the user to manage an irrigation system that has one or many points of connection and one or many controllers sharing these points of connection.



Easy Setup

## Smart Field Controllers

The intelligent **CALSENSE® ET2000e** controller has been designed with the **FLOWSENSE®** option for easy setup by the user in the field. Setup and operation is done at the controller in the field with no central computer required. Simple setup, accurate problem detection, easy to use. **CALSENSE®** provides a user-friendly tool that will help you achieve and prove the water and labor savings you've been looking for.

## FLOWSENSE® Technology

**CALSENSE®** has developed the **FLOWSENSE®** option to include cooperative communication and shared management features that allow the following:

- No more scheduling conflicts between multiple controllers.
- Eliminate relays when sharing pumps or master valves with several controllers.
- Manage the number of valves ON based upon flow capacities.
- Water management capabilities with or without a flow meter.
- Pump performance managed for electrical savings.
- All of this done in the field without a central computer.

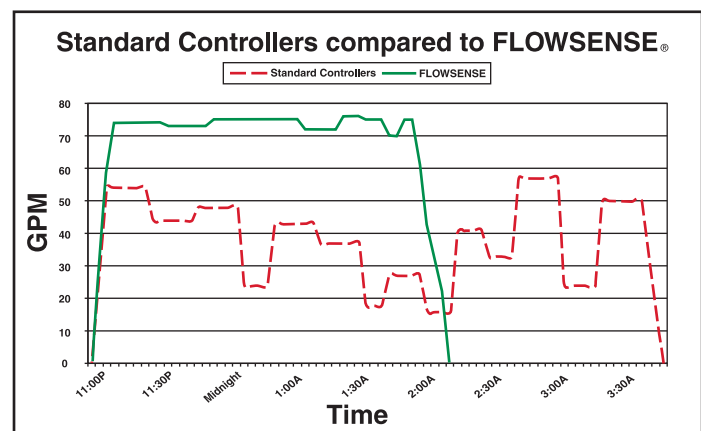
If you want the most flexible Water Management System that is the easiest to use then the **CALSENSE® ET2000e** with the **FLOWSENSE®** option is for you.

## Flow Management

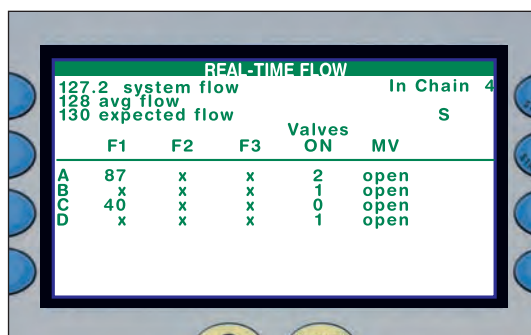
The **FLOWSENSE®** technology is designed to manage the proper operation of valves so pump or system capacities are not exceeded yet the water window is decreased by the controller activating the maximum number of valves.

Standard controllers don't allow you to minimize your water window and don't allow the pump to work at maximum efficiency.

The bottom line: your system performs the most efficiently with the **FLOWSENSE®** option giving you the savings you expect.



FLOWSENSE® Water Management



Real-Time Flow Monitoring

## Real-Time Flow

The **FLOWSENSE®** technology used in the **ET2000e** controller allows immediate viewing of the real-time flow readings of every flow meter on the system. No longer does the field personnel have to guess at how much water is flowing or which point of connection is supplying the water. This valuable flow information is easily displayed in the field where the field personnel is standing.

Simple, convenient and easy, these are the reasons for **CALSENSE®**.